

NOTES:  
 - ALL PRECAST CONCRETE TO MEET CURRENT ASTM C478 STANDARDS.  
 - ALL DIMENSIONS IN MILLIMETERS UNLESS OTHERWISE STATED.



## STANDARD 1200mm DIAMETER CATCH BASIN MANHOLE

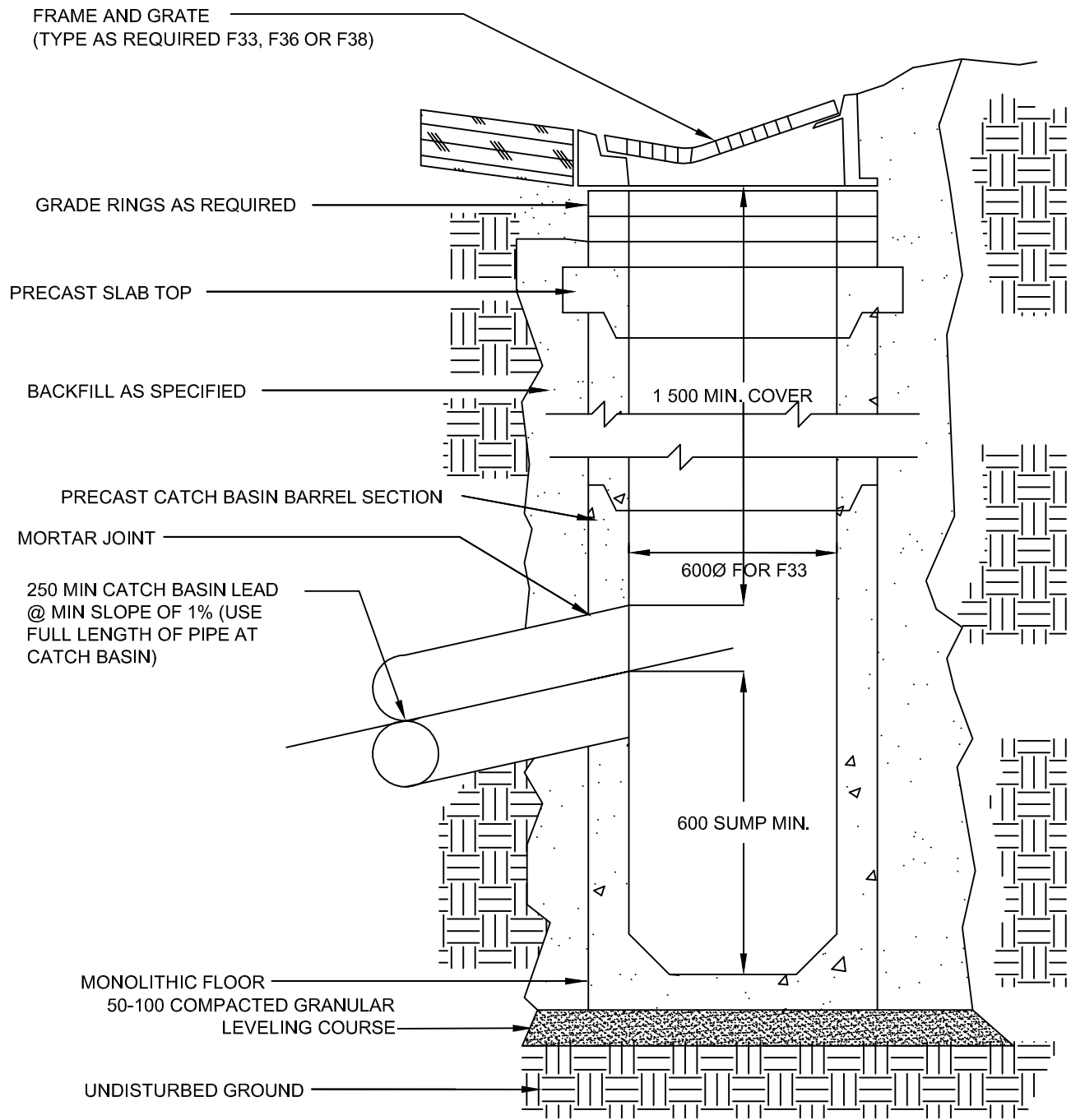
DRAWING NO. 11-1

APPROVED:

SCALE: NTS

DATE: JULY 2007

DIRECTOR OF PLANNING &  
TECHNICAL SERVICES: \_\_\_\_\_



NOTES:

- ALL PRECAST CONCRETE SHALL MEET CURRENT ASTM C14 STANDARDS.
- ALL DIMENSIONS IN MILLIMETERS UNLESS OTHERWISE STATED.



## TYPICAL 600mm DIAMETER CATCH BASIN

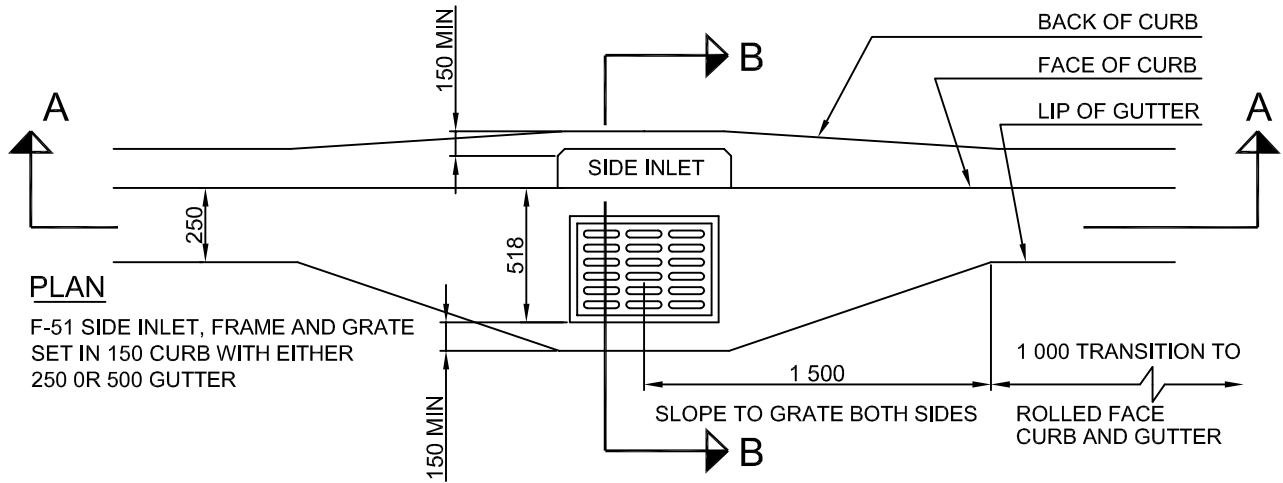
DRAWING NO. 11-2

SCALE: NTS

DATE: JULY 2007

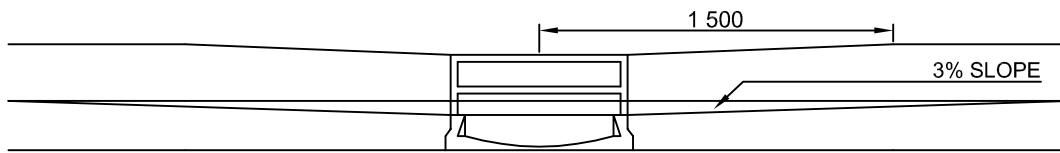
APPROVED:

DIRECTOR OF PLANNING &  
TECHNICAL SERVICES: \_\_\_\_\_



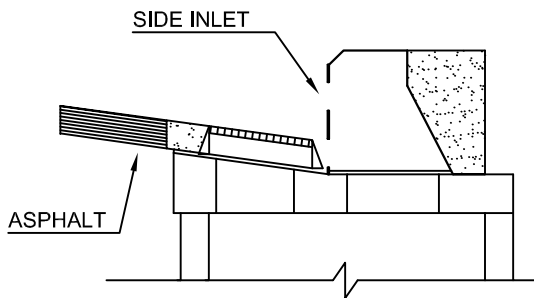
**PLAN**

F-51 SIDE INLET, FRAME AND GRATE SET IN 150 CURB WITH EITHER 250 OR 500 GUTTER



**SECTION A - A**

SIDE INLET TO BE REPLACEABLE



**SECTION B - B**

TO BE READ IN CONJUNCTION WITH DRAWINGS 11.2

NOTE:  
- ALL DIMENSIONS IN MILLIMETERS UNLESS OTHERWISE STATED.



**TYPICAL INSTALLATIONS FOR F-51 CATCH BASIN FRAME AND GRATE**

DRAWING NO. 11-4

SCALE: NTS

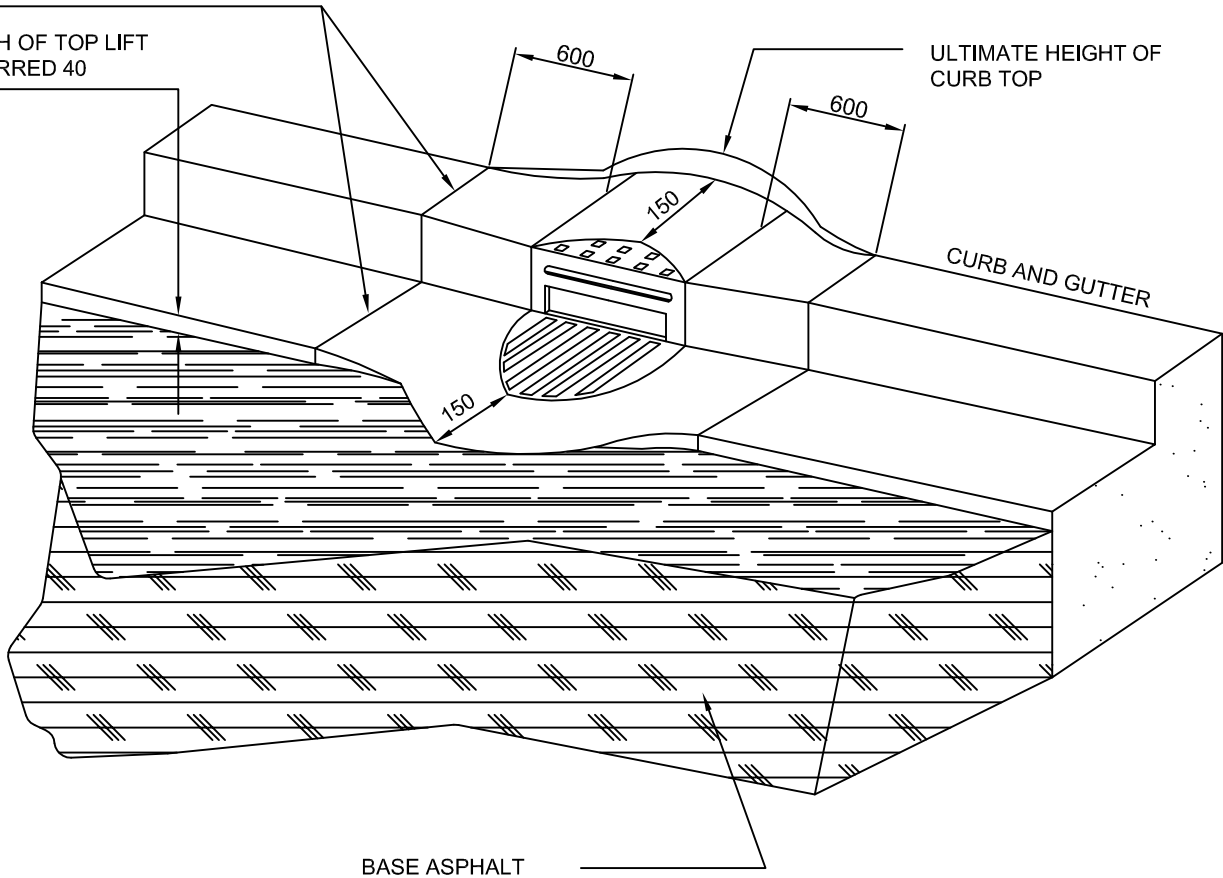
DATE: JULY 2007

APPROVED:

DIRECTOR OF PLANNING & TECHNICAL SERVICES: \_\_\_\_\_

DEEP CUTS AT THESE LOCATIONS  
TO FACILITATE FUTURE BREAKOUT

DEPTH OF TOP LIFT  
DEFERRED 40



TYPICAL CURB AND GUTTER TREATMENT AT CATCH BASINS WHEN  
ASPHALT TOP LIFT IS DEFERRED.

NOTE:

- ALL DIMENSIONS IN MILLIMETERS UNLESS OTHERWISE STATED.



## TYPICAL DROPPED GUTTER LIP AT CATCH BASINS

(FOR USE DURING INTERIM STAGE OF CONSTRUCTION)

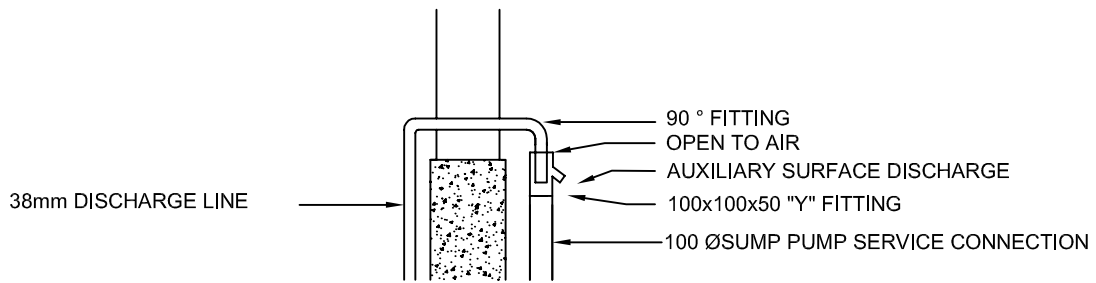
DRAWING NO. 11-5

SCALE: NTS

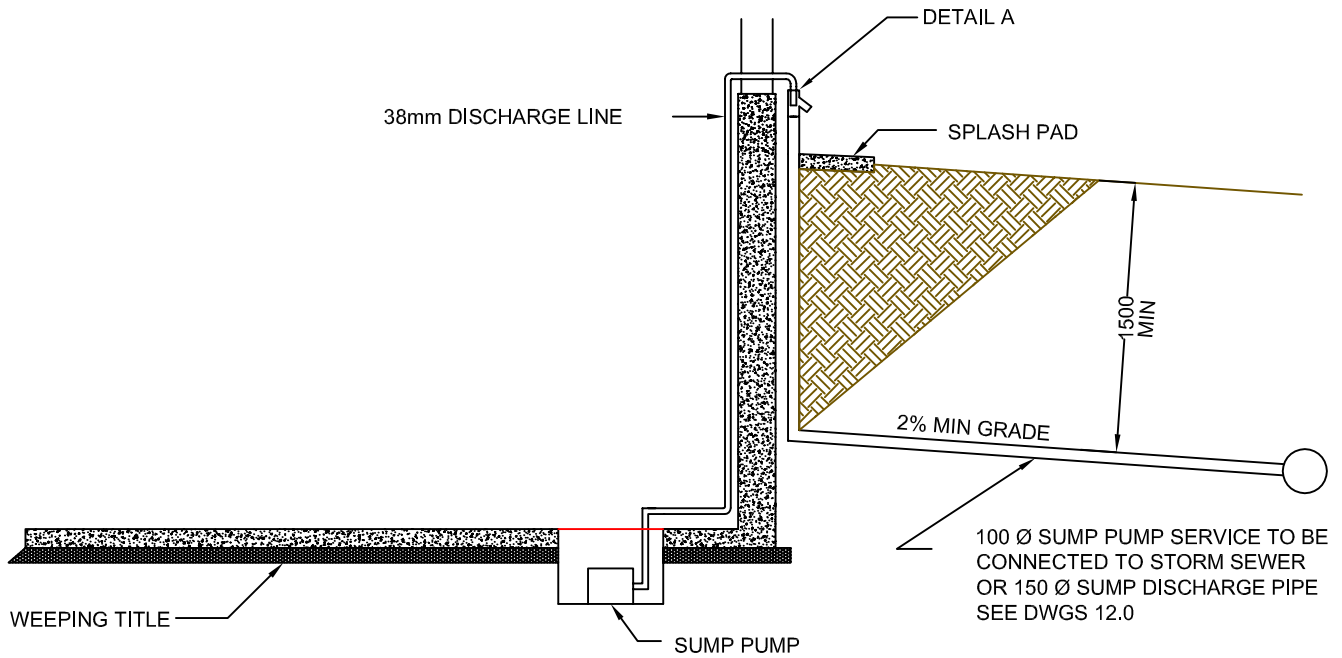
DATE: JULY 2007

APPROVED:

DIRECTOR OF PLANNING &  
TECHNICAL SERVICES: \_\_\_\_\_



DETAIL A



NOTES:

- ABOVE INSTALLATION APPLICABLE WHERE UNDERGROUND STORM SYSTEM EXISTS, OTHERWISE ONLY AUXILIARY SURFACE DISCHARGE APPLY.
- ALL DIMENSIONS IN MILLIMETERS UNLESS OTHERWISE STATED.



## TYPICAL HOUSE SUMP PUMP DISCHARGE

DRAWING NO. 11-6

SCALE: NTS

DATE: JULY 2007

APPROVED:

DIRECTOR OF PLANNING &  
TECHNICAL SERVICES: \_\_\_\_\_