

2024

TOWN OF HINTON [SIGNAGE STANDARDS MANUAL]

Prepared by Urban Systems Ltd. November 2011
Updated April 2024



Table of Contents

1.0	CONTEXT.....	1
1.1	BACKGROUND	1
1.2	INTRODUCTION: HOW TO USE THIS MANUAL	1
1.3	DESIGN PHILOSOPHY AND INTENT.....	2
2.0	SIGNAGE FAMILIES	5
2.1	WAYFINDING SIGNAGE.....	5
	<i>Figure 1: Highway Corridor Sign</i>	<i>7</i>
	<i>Figure 2: Corridor Sign</i>	<i>9</i>
	<i>Figure 3: District Sign.....</i>	<i>11</i>
	<i>Figure 4: Park Sign</i>	<i>13</i>
	<i>Figure 5: Silhouette.....</i>	<i>15</i>
	<i>Figure 6: Directional Sign (multiple)</i>	<i>18</i>
	<i>Figure 7: Directional Sign (single)</i>	<i>20</i>
2.2	TRAILS SIGNAGE	21
	<i>Figure 8: Primary Trailhead Sign</i>	<i>23</i>
	<i>Figure 9: Secondary Trailhead Sign</i>	<i>25</i>
	<i>Figure 10: Directional Trail Marker</i>	<i>27</i>
	<i>Figure 11: Park And Trail Standard Signage.....</i>	<i>29</i>
	<i>Figure 12: Directional Trail Sign</i>	<i>31</i>
2.3	PARK AND TRAIL INTERPRETIVE SIGNAGE.....	33
	<i>Figure 13: Multi-Panel Interpretive Sign.....</i>	<i>35</i>
	<i>Figure 14: Single Panel Interpretive Sign</i>	<i>37</i>
	<i>Figure 15: Interpretive Trail Sign</i>	<i>39</i>
3.0	MAINTENANCE AND REPLACEMENT.....	40
3.1	PREVENTING DAMAGE, GRAFFITI AND VANDALISM.....	40
3.2	MAINTENANCE PRACTICES.....	40
3.3	MAINTENANCE SPECIFICATIONS.....	42

This page is intentionally blank

1.0 CONTEXT

1.1 Background

This Signage Standards Manual was originally prepared in 2011 as a result of several studies conducted by the Town of Hinton aiming to improve parks, trails, recreation facilities, visitor services and attractions. The underlying goals of these studies were to create an aesthetic unique to Hinton, provide visitors a sense of place upon arrival, improve the quality of life for residents and enhance visitor experience. These documents included the *2003 Community Development and Enhancement Plan* (CDEP), the *2008 Highway 16 Corridor Enhancement Plan* (CEP) and the *2011 Town of Hinton Trails Master Plan* (TMP). These documents served as the foundation for the origin of the Hinton signage families, including materials, content, configuration, colours and use of imagery. The most relevant and relied upon document now is the Town of Hinton's *Parks, Open Space and Trails Master Plan 2019* (POST), available on the Town of Hinton website (www.hinton.ca).

Maintaining the aesthetic and visual identity of Hinton is important to the Town. The Signage Standards Manual has served the Town well for the last 13 years and required an update to incorporate lessons learned from Administration, to adapt signage for broader usage and contemporary contexts within the community, as well as include adjustments to some materials and maintenance to better reflect best practices and approaches employed by the Town.

1.2 Introduction: How to Use this Manual

The Signage Standards Manual features three families of signage used by the Town of Hinton:

- Wayfinding Signage
- Trails Signage
- Park and Trail Interpretive Signage (formerly Happy Creek Interpretive Signage)

Each signage family features a hierarchy of signs that respond to the different needs of navigation for either pedestrians or vehicles. Each sign in this manual has been featured with a brief write up and detailed 'cut sheet' that can be used to determine the type of sign appropriate for a given application. For in-depth construction details, refer to the approved construction drawings. (available from the Town of Hinton).

1.3 Design Philosophy and Intent

Goals for Signage

Town of Hinton Goals

- To achieve an urban form that is unique and recognizable, that will enhance the community, become a source of pride, and prompt visitors to stay awhile
- To highlight and promote key attractions throughout Hinton
- To promote safe, enjoyable experiences
- To celebrate historic, natural and cultural elements
- To provide safe navigation

Design Goals

- To achieve a consistent, recognizable overall visual standard that will enhance the character of the Town of Hinton in the eyes of Hinton residents as well as create a unique, attractive experience for the out-of-town visitor.

Sign Aesthetics

The materials and colours chosen in the signage families are intended to celebrate the 'spirit' of Hinton that was determined and approved in the CDEP and the HWY 16 CEP. With reference to the four 'icons' and use of materials that nod to the long history of industry in Hinton, these signs will provide visual reference to many of the unique characteristics of the Town of Hinton.

A consistent palette of peeled and split round logs, metals, exposed hardware, rough sawn timbers, stone, and other natural, rustic materials unify the signage throughout the Town of Hinton. This creates an identity specific to the Town and allows easy recognition and identification for users.

Material Alternates

For several sign types, 'peeled round log' is recommended as the Town's 'Preferred Product'. Where a sign specifies 'peeled round log', it is noted that some conditions related to sign location and/or access may warrant an alternate material. As such, painted steel pipe is recommended as an acceptable alternative and is subject to pre-approval by Town Administration.

Parameters for approving the alternate post material include, for example, whether:

- The location of a sign is not broadly visible nor along a pedestrian route.
- The location of a sign is difficult to access for routine maintenance.
- The sign is ultimately temporary but must be durable.

Examples of situations where the parameters may warrant alternate material:

- A sign is located along a pedestrian route that will not be visible to others beyond the route.
- A sign is required to direct users to a destination within an area under development and the final build-out is expected to require sign relocation.
- A sign is required within a trail network to clearly identify directions at a central decision-making point but the location is difficult to access except seasonally.
- Where a sign acknowledges an important project partner, sponsor, or donor for a set but limited period of time (e.g., one or more years.)

Applicable Sign Types:

The alternate material consideration applies only to sign types that specify peeled round logs. Sign types in this category include:

- Highway Corridor Sign
- Corridor Sign
- District Sign
- Park Sign
- Directional Sign (multiple)
- Directional Sign (single)

This page is intentionally blank

2.0 SIGNAGE FAMILIES

2.1 Wayfinding Signage

Intended Function

The Wayfinding Family of signs is a direct response to a need identified in the CDEP for navigational signage from the Highway 16 corridor to the many amenities away from the highway throughfare. These signs are intended to direct drivers from the highway toward key amenities and areas of interest throughout the Town. The theming of the Wayfinding Signage is directly related to the development conducted as part of the Highway 16 Corridor Enhancement Plan. Of the four visual icons identified in that study, the Indian Paintbrush was chosen to be represented on this family of signs.

Vehicular Scale

These signs are intended to be used by those in a vehicle. They have been designed using typical viewing heights and font sizes for vehicular navigation, based on common community signage standards and the viewing requirements for specific signage locations.

Construction Drawings

Refer to "Wayfinding Signage" drawing package for construction drawings.
(available from the Town of Hinton)

Sign Types

- A. Highway Corridor Sign
- B. Corridor Sign
- C. District Sign
- D. Park Sign
- E. Silhouette
- F. Directional Sign (multiple)
- G. Directional Sign (single)

A. Highway Corridor Sign

i. Function

The Highway Corridor Sign is used to identify key corridors that connect to Highway 16 and lead to various amenities throughout Town. There are currently two identified corridors in the Town of Hinton: the "Happy Creek Corridor", which leads users along Mountain Street; and, the "Learning and Leisure Corridor", which leads users along Switzer Drive.

For a road to be considered a corridor it must host a minimum of four major destinations or amenities such as parks, colleges, theaters, libraries, etc.

ii. Location/ Orientation

Highway Corridor Signs must be located in a municipally owned boulevard directly adjacent to Highway 16, as close to the corridor intersection as site lines and land availability will allow.

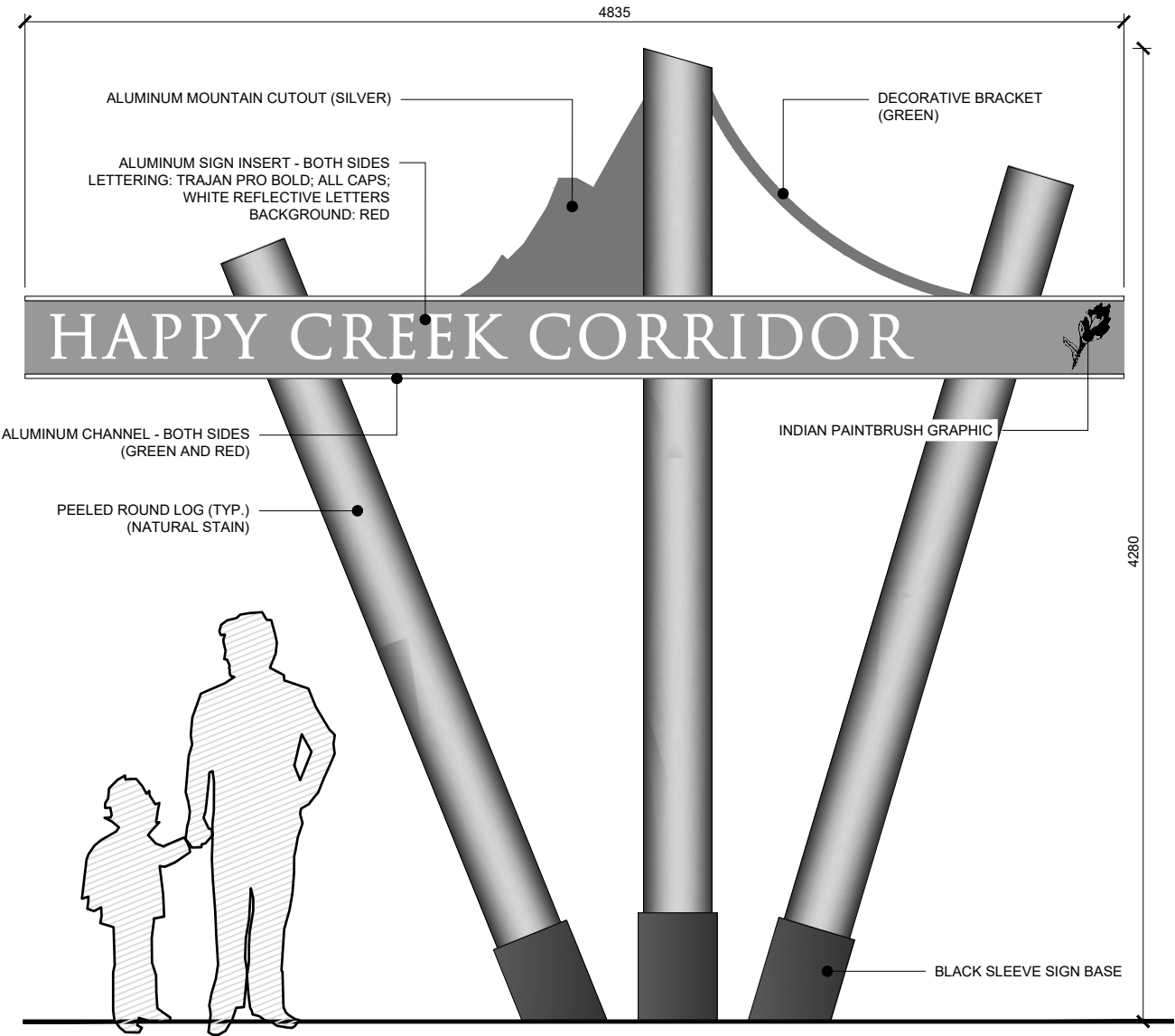
Highway Corridor Signs are double-sided and oriented with the mountain cutout detail pointing out towards the highway.

iii. Materials

- Peeled round log
- Steel sign base - sleeve style
- Exposed hardware
- Aluminum details - mountain cutout, decorative bracket, sign channel, sign insert
- Transportation grade lettering (highly reflective, prismatic)
- Use of 'Indian Paintbrush' Town theme icon

NOTE:

1. HIGHWAY CORRIDOR SIGN TO BE LOCATED IN A MUNICIPALLY OWNED BOULEVARD ADJACENT TO HIGHWAY 16, AS CLOSE TO THE CORRIDOR INTERSECTION AS SITE LINES AND LAND AVAILABILITY WILL ALLOW.
2. CONTRACTOR RESPONSIBLE FOR SUBMITTING ALL PROOFS, SHOP DRAWINGS AND SUBSTITUTIONS PRIOR TO CONSTRUCTION.
3. SOILS MAY VARY. GEOTECHNICAL ASSESSMENT AND STRUCTURAL REVIEW REQUIRED PRIOR TO THE PLACEMENT OF FUTURE SIGNS.
4. REFER TO "WAYFINDING SIGNAGE" CONSTRUCTION DRAWING PACKAGE FOR DETAILS, CONNECTIONS, FOOTINGS, MATERIALS AND FINISHES.



ELEVATION

HIGHWAY CORRIDOR SIGN



DRAWING NO.

2.1 - FIGURE 1

CONSTRUCTION DRAWINGS:

SCALE: 1:30

DATE: APRIL 2024

WAYFINDING SIGNAGE

B. Corridor Sign

i. Function

The Corridor Sign is to direct users to key amenities along the corridors that connect to Highway 16. Amenities are identified on the hanging signs with an arrow pointing users toward various amenities.

A Corridor Sign will be used when four or more amenities are to be highlighted along the corridor. The Town will identify when a corridor sign will be used, versus a Directional Sign (multiple).

ii. Location/ Orientation

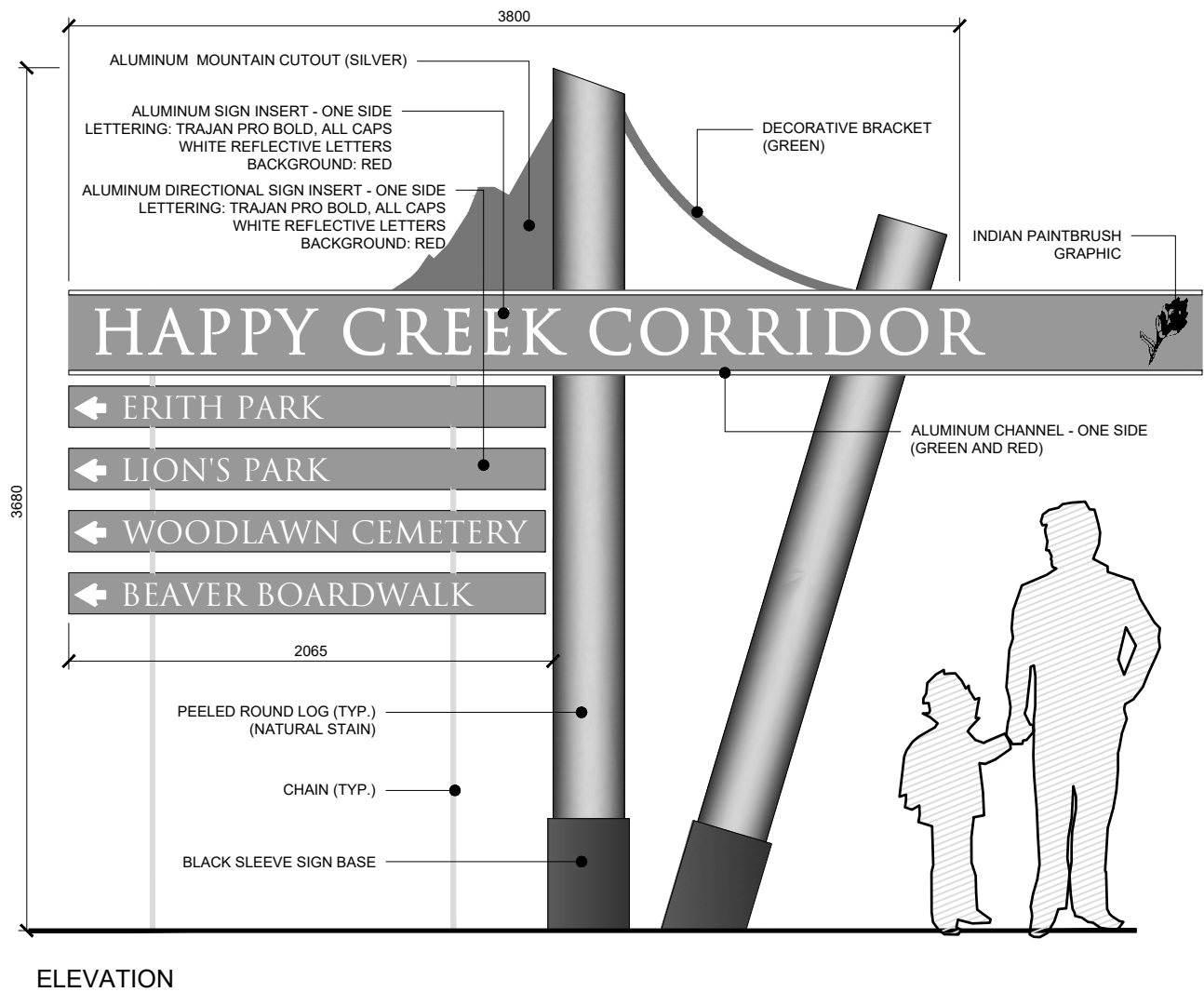
Corridor Signs must be located in a municipally owned boulevard but not interfere with sidewalks or overhang the roadway. Every corridor will receive two corridor signs; one for the beginning and one for the end of the corridor.

Corridor Signs are single sided and installed on the right-hand side of the most common direction of travel. They are oriented with the mountain cutout pointing out toward the roadway.

iii. Materials

- Peeled round log
- Steel sign base - sleeve style
- Exposed hardware
- Aluminum details – mountain cutout, decorative bracket, sign channel, sign insert, directional sign insert
- Transportation grade lettering (highly reflective, prismatic)
- Use of 'Indian Paintbrush' Town theme icon
- Tension chain

- NOTE:
- 1. CORRIDOR SIGN TO BE LOCATED IN A MUNICIPALLY OWNED BOULEVARD. EVERY CORRIDOR WILL RECEIVE TWO CORRIDOR SIGNS, ONE AT THE BEGINNING AND ONE AT THE END.
 - 2. CONTRACTOR RESPONSIBLE FOR SUBMITTING ALL PROOFS AND SUBSTITUTIONS PRIOR TO CONSTRUCTION.
 - 3. SOILS MAY VARY. GEOTECHNICAL ASSESSMENT AND STRUCTURAL REVIEW REQUIRED PRIOR TO THE PLACEMENT OF FUTURE SIGNS.
 - 4. REFER TO "WAYFINDING SIGNAGE" CONSTRUCTION DRAWING PACKAGE FOR DETAILS, CONNECTIONS, FOOTINGS, MATERIALS AND FINISHES.



CORRIDOR SIGN



DRAWING NO.

2.1 - FIGURE 2

CONSTRUCTION DRAWINGS:

SCALE: 1:30

DATE: APRIL 2024

WAYFINDING SIGNAGE

C. District Sign

i. Function

The District Sign is used to identify the location of neighborhoods and districts in Hinton.

The District Sign will be used on an as needed basis, as determined by the Town.

ii. Location/ Orientation

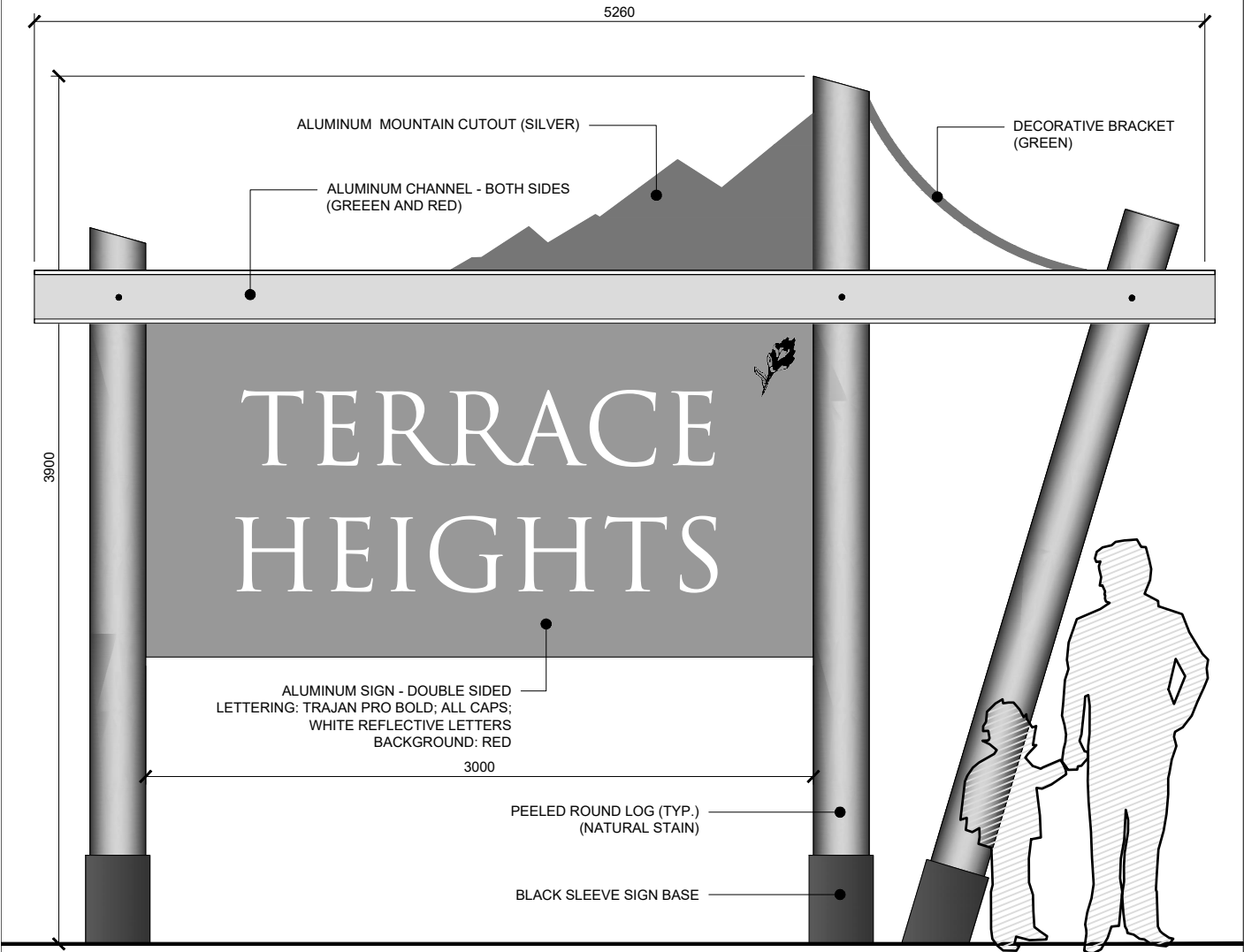
District signs must be located in a municipally owned boulevard or median and not interfere with sidewalks or overhang the roadway. A District Sign is to be installed as close to the vehicular entrance of a neighborhood as possible, perpendicular to the roadway. The location shall maintain sight lines for both vehicles and pedestrians entering and exiting the area.

District Signs are double-sided and installed on the side of the entrance that is most visible to the most common direction of travel. They will be installed with the mountain cut out pointing out toward the roadway.

iii. Materials

- Peeled round log
- Steel sign base - sleeve style
- Exposed hardware
- Aluminum details- mountain cutout, decorative bracket, sign channel, neighborhood sign insert
- Transportation grade lettering (highly reflective, prismatic)
- Use of 'Indian Paintbrush' Town theme icon

- NOTE:
- 1. DISTRICT SIGN TO BE LOCATED AT THE VEHICULAR ENTRANCE OF A NEIGHBORHOOD, PERPENDICULAR TO THE ROADWAY.
 - 2. CONTRACTOR RESPONSIBLE FOR SUBMITTING ALL PROOFS, SHOP DRAWINGS AND SUBSTITUTIONS PRIOR TO CONSTRUCTION.
 - 3. SOILS MAY VARY. GEOTECHNICAL ASSESSMENT AND STRUCTURAL REVIEW REQUIRED PRIOR TO THE PLACEMENT OF FUTURE SIGNS.
 - 4. REFER TO "WAYFINDING SIGNAGE" CONSTRUCTION DRAWING PACKAGE FOR DETAILS, CONNECTIONS, FOOTINGS, MATERIALS AND FINISHES.



ELEVATION

DISTRICT SIGN



DRAWING NO. 2.1 - FIGURE 3

SCALE: 1:30

DATE: APRIL 2024

CONSTRUCTION DRAWINGS:
WAYFINDING SIGNAGE

D. Park Sign

i. Function

The Park Sign is used to identify the location of important destinations throughout Town, including parks, natural areas and other amenities.

The Park Sign will be used on an as needed basis, as determined by the Town.

ii. Location/ Orientation

Park Signs must be located in a municipally owned boulevard and not interfere with sidewalks or overhang the roadway. A Park Sign is to be installed as close to the vehicular entrance of an amenity as possible, perpendicular to the roadway. The location shall maintain site lines for both vehicles and pedestrians entering and exiting the facility.

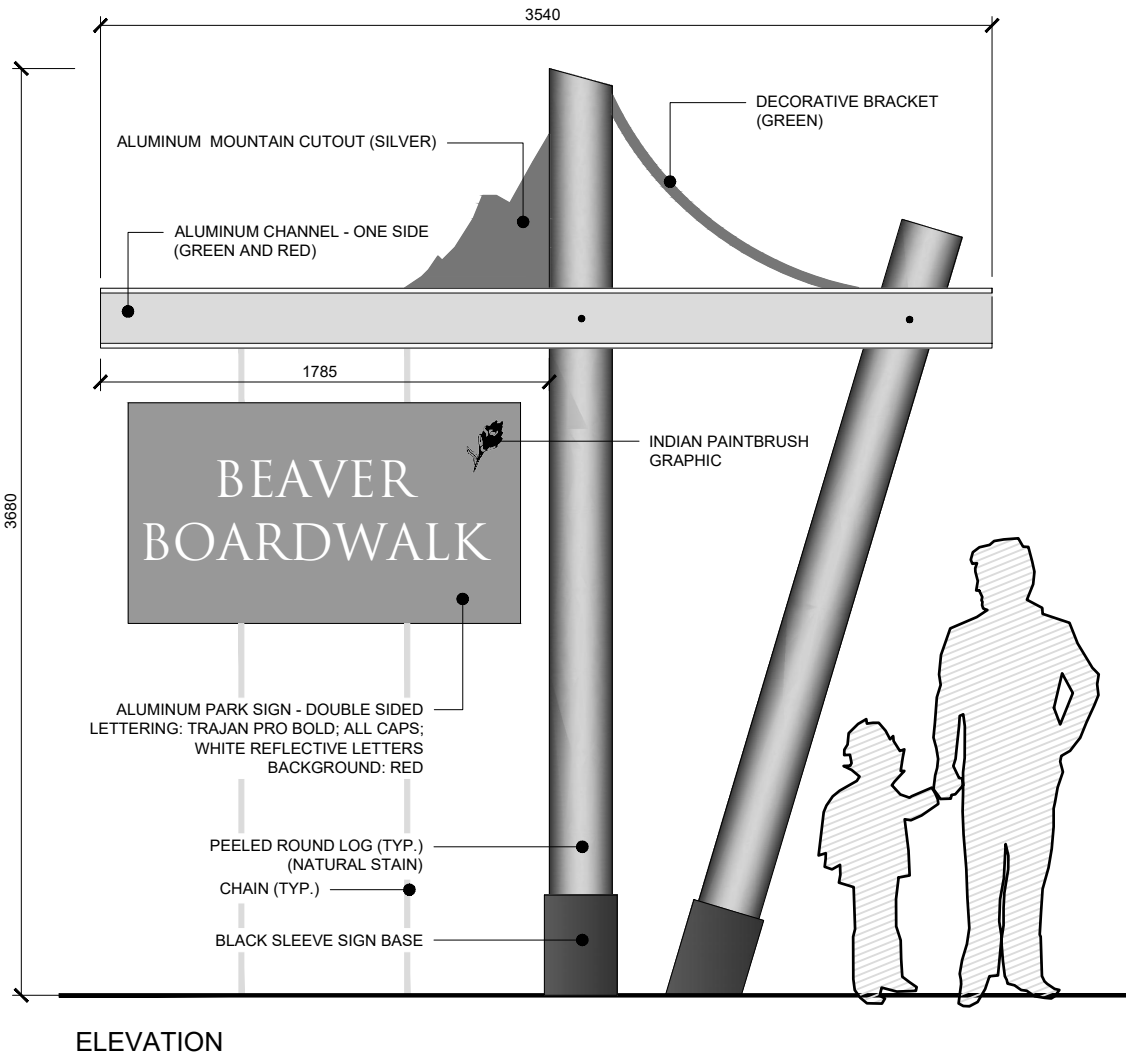
Park Signs are double-sided and installed on the side of the entrance that is most visible to the most common direction of travel. They will be installed with the mountain cut out pointing out toward the roadway.

iii. Materials

- Peeled round log
- Steel sign base - sleeve style
- Exposed hardware
- Aluminum details - mountain cutout, decorative bracket, sign channel, park sign insert
- Transportation grade lettering (highly reflective, prismatic)
- Use of 'Indian Paintbrush' Town theme icon
- Tension chain

NOTE:

- 1. PARK SIGN TO BE LOCATED AT THE VEHICULAR ENTRANCE OF A TOWN PARK OR OTHER AMENITY, PERPENDICULAR TO THE ROADWAY.
- 2. CONTRACTOR RESPONSIBLE FOR SUBMITTING ALL PROOFS, SHOP DRAWINGS AND SUBSTITUTIONS PRIOR TO CONSTRUCTION.
- 3. SOILS MAY VARY. GEOTECHNICAL ASSESSMENT AND STRUCTURAL REVIEW REQUIRED PRIOR TO THE PLACEMENT OF FUTURE SIGNS.
- 4. REFER TO "WAYFINDING SIGNAGE" CONSTRUCTION DRAWING PACKAGE FOR DETAILS, CONNECTIONS, FOOTINGS, MATERIALS AND FINISHES.



PARK SIGN



DRAWING NO.

2.1 - FIGURE 4

CONSTRUCTION DRAWINGS:

WAYFINDING SIGNAGE

SCALE: 1:30

DATE: APRIL 2024

E. Silhouette

i. Function

The Silhouette is a decorative element to enhance placemaking efforts along significant corridors. There are currently eight (8) silhouette designs, depicting various aspects of four key themes: Active Living, Nature, Indigenous Culture and Industry. Silhouettes are designed to be fastened to light standards by mounting brackets with provisional designs for octagonal and round poles. Silhouette imagery and graphics are property of the Town of Hinton and require written consent for use beyond the intended signage program.

ii. Location/ Orientation

Silhouette must be located in a municipally owned boulevard and not interfere with sidewalks or overhang the roadway. Important consideration is to be made to ensure clearance from the roadway while optimizing visibility. A Silhouette Sign is to be installed at a consistent height within a given corridor alignment.

Silhouette Signs are double-sided and have been designed according to standard viewing heights and lettering sizes for municipal street signs.

iii. Materials

- Aluminum panel with themed cutouts and powder coat finish
- Welded aluminum mounting bracket assembly
- Exposed hardware



IMAGE 001 - COATED CUTOUT - "BEAVER"
REFER TO "SILHOUETTE BRACKETS"
DETAIL SHEET



IMAGE 002 - COATED CUTOUT - "PAINTBRUSH"
REFER TO "SILHOUETTE BRACKETS"
DETAIL SHEET



IMAGE 003 - COATED CUTOUT - "COUGAR"
REFER TO "SILHOUETTE BRACKETS"
DETAIL SHEET



IMAGE 004 - COATED CUTOUT - "FEATHER"
REFER TO "SILHOUETTE BRACKETS"
DETAIL SHEET



IMAGE 005 - COATED CUTOUT - "LOGGING
TRUCK"
REFER TO "SILHOUETTE BRACKETS"
DETAIL SHEET



IMAGE 006 - COATED CUTOUT - "SHEEP"
REFER TO "SILHOUETTE BRACKETS"
DETAIL SHEET



IMAGE 007 - COATED CUTOUT - "HIKER"
REFER TO "SILHOUETTE BRACKETS"
DETAIL SHEET



IMAGE 008 - COATED CUTOUT - "MOUNTAIN
BIKER"
REFER TO "SILHOUETTE BRACKETS"
DETAIL SHEET

- NOTE:
1. MATERIAL TO BE $\frac{3}{16}$ " 5052 ALUMINUM
 2. FINISH TO BE POWDERCOAT A537 SANDEX BLACK
 3. EACH SILHOUETTE INCLUDES (2) WELDED BRACKETS - REFER TO "SILHOUETTE BRACKETS" DETAIL SHEET FOR MATERIALS AND SPECIFICATIONS.
 4. MAX DIMENSIONS: 3' WIDTH X 6' HEIGHT

SPECIAL NOTE:
Silhouette imagery and graphics are property of the Town of Hinton and require written consent for use beyond the intended signage program.

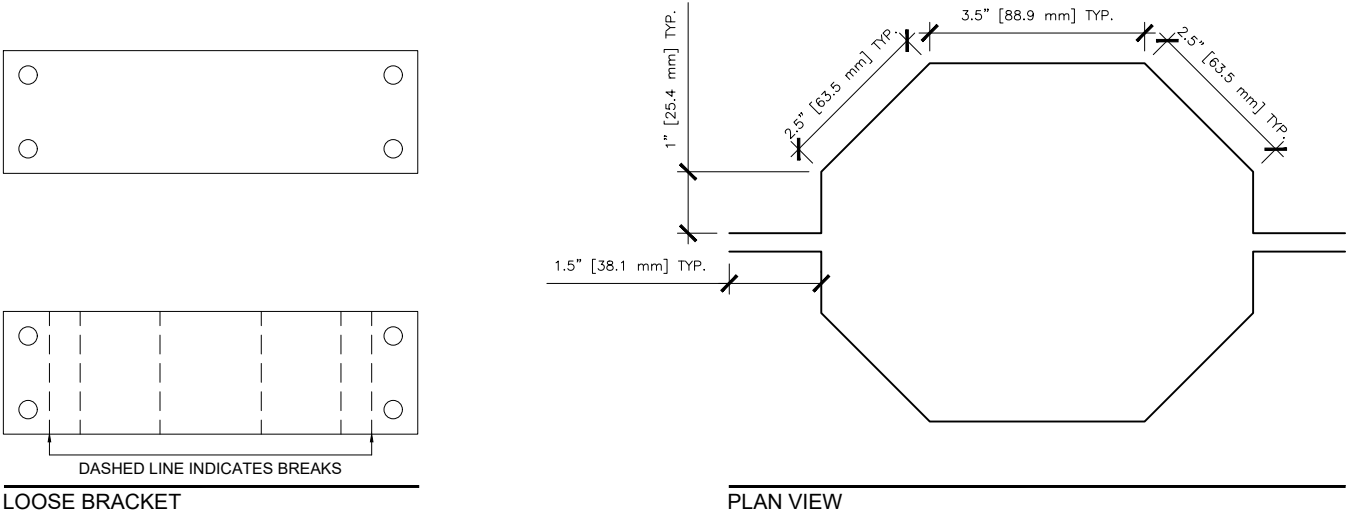
SILHOUETTE



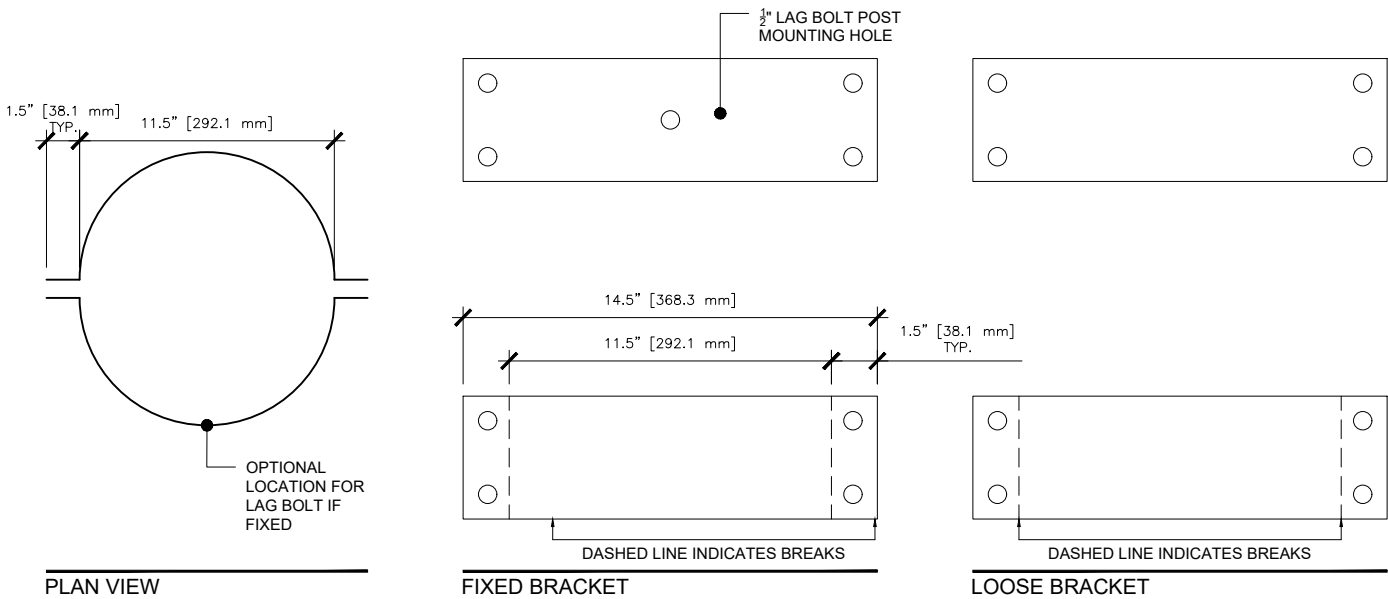
DRAWING NO.	2.1 - FIGURE 5
SCALE: 1:20	DATE: APRIL 2024

CONSTRUCTION DRAWINGS:
WAYFINDING SIGNAGE

OCTAGONAL METAL POST MOUNTING BRACKET




WOODEN ROUND POST MOUNTING BRACKET



- NOTE:
- BRACKETS TO BE WELDED TO SILHOUETTES AT $\pm 5'$ INTERVALS AND AS BEST FIT.
 - UPPER/LOWER BRACKETS PER SILHOUETTE
 - MATERIAL: $\frac{3}{16}$ " 5052 ALUMINUM

SILHOUETTE BRACKETS

	DRAWING NO. 2.1 - FIGURE 5		CONSTRUCTION DRAWINGS: WAYFINDING SIGNAGE
	SCALE: N.T.S.	DATE: APRIL 2024	

F. Directional Sign (multiple)

i. Function

The Directional Sign (multiple) is used to direct users to key amenities along the corridors that connect to Highway 16. Amenities are identified on the fixed signs with an arrow pointing the user toward the amenity they seek.

A Directional Sign (multiple) will be used when four or fewer amenities are to be identified along the corridor. The Town will identify when a Directional Sign (multiple) sign will be used versus a Corridor Sign. If two or less amenities are to be identified, a Directional Sign (single) will be considered.

ii. Location/ Orientation

A Directional Sign (multiple) must be located in a municipally owned boulevard and not interfere with sidewalks or overhang the roadway.

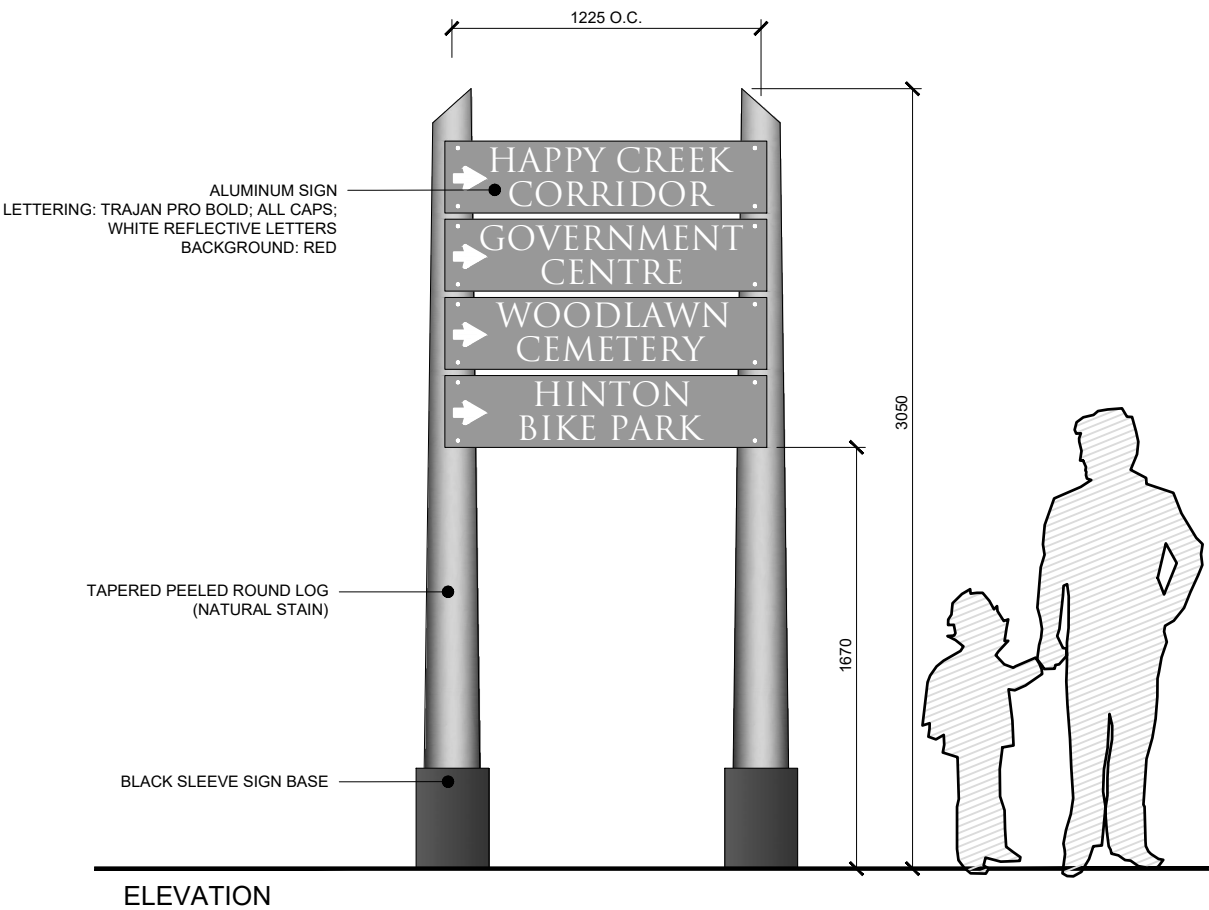
A Directional Sign (multiple) is single sided and always installed on the right-hand side of the most common direction of travel. The sign should be installed perpendicular to the adjacent roadway.

iii. Materials

- Peeled round log
- Steel sign base - sleeve style
- Exposed hardware
- Aluminum details - sign inserts
- Transportation grade lettering (highly reflective, prismatic)

NOTE:

- 1. DIRECTIONAL SIGN (MULTIPLE) TO BE LOCATED ALONG CORRIDORS THAT CONNECT TO HIGHWAY 16, PERPENDICULAR TO THE ROADWAY.
- 2. CONTRACTOR RESPONSIBLE FOR SUBMITTING ALL PROOFS, SHOP DRAWINGS AND SUBSTITUTIONS PRIOR TO CONSTRUCTION.
- 3. SOILS MAY VARY. GEOTECHNICAL ASSESSMENT AND STRUCTURAL REVIEW REQUIRED PRIOR TO THE PLACEMENT OF FUTURE SIGNS.
- 4. REFER TO "WAYFINDING SIGNAGE" CONSTRUCTION DRAWING PACKAGE FOR DETAILS, CONNECTIONS, FOOTINGS, MATERIALS AND FINISHES.



DIRECTIONAL SIGN (MULTIPLE)



DRAWING NO.	2.1 - FIGURE 6
SCALE: 1:30	DATE: APRIL 2024

CONSTRUCTION DRAWINGS:
WAYFINDING SIGNAGE

G. Directional Sign (single)

i. Function

The Directional Sign (single) is used to direct users to key amenities along the corridors that connect to Highway 16. Amenities are identified on the fixed signs with an arrow pointing the user toward the amenity they seek.

A Directional Sign (single) will be used when two or fewer amenities are to be identified along the corridor. The Town will identify when a Directional Sign (single) sign will be used versus a Directional Sign (multiple).

ii. Location/ Orientation

A Directional Sign (single) must be located in a municipally owned boulevard and not interfere with sidewalks or overhang the roadway.

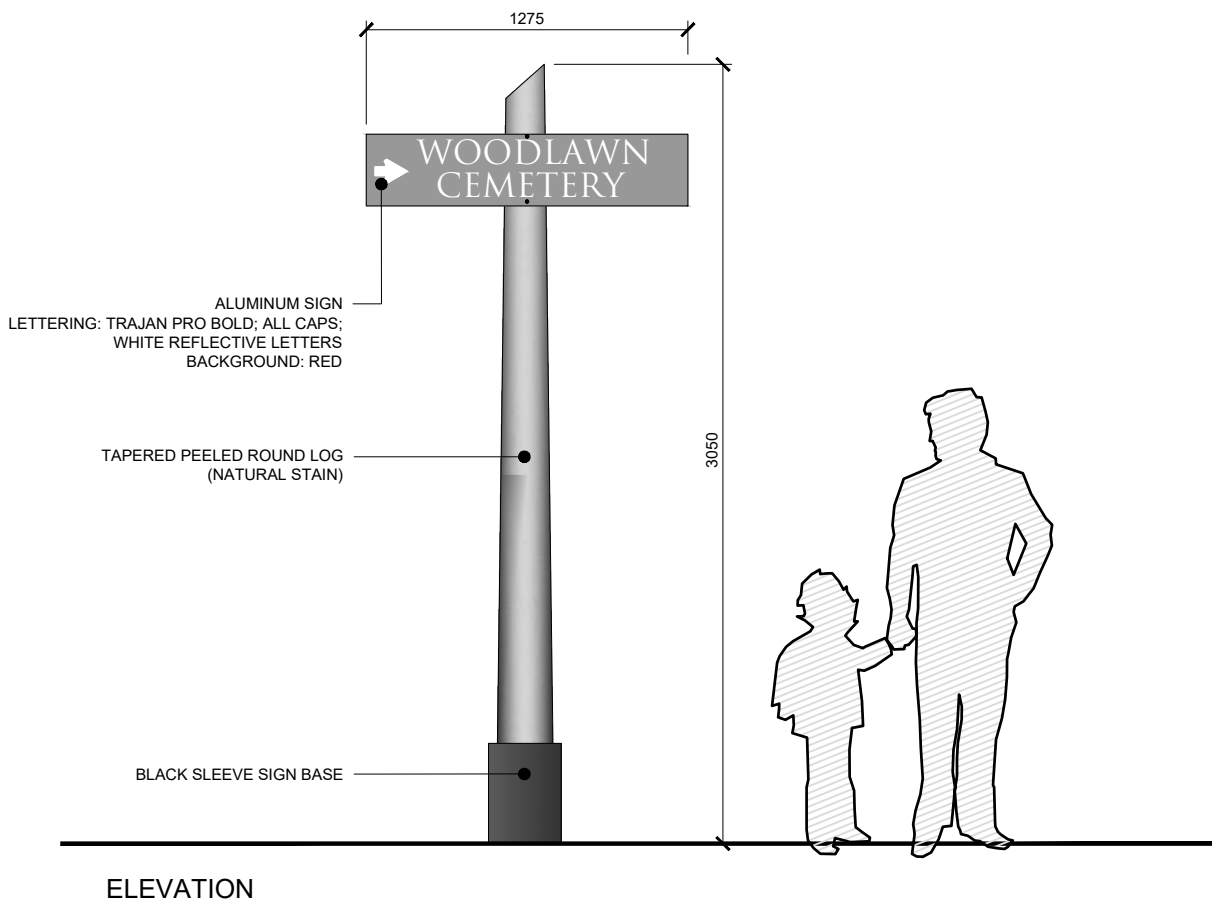
A Directional Sign (single) is single sided and always installed on the right-hand side of the most common direction of travel. The sign should be installed perpendicular to the adjacent roadway.

iii. Materials

- Peeled round log
- Steel sign base - sleeve style
- Exposed hardware
- Aluminum details - sign inserts
- Transportation grade lettering (highly reflective, prismatic)

NOTE:

1. DIRECTIONAL SIGN (SINGLE) TO BE LOCATED ALONG CORRIDORS THAT CONNECT TO HIGHWAY 16, PERPENDICULAR TO THE ROADWAY.
2. CONTRACTOR RESPONSIBLE FOR SUBMITTING ALL PROOFS, SHOP DRAWINGS AND SUBSTITUTIONS PRIOR TO CONSTRUCTION.
3. SOILS MAY VARY. GEOTECHNICAL ASSESSMENT AND STRUCTURAL REVIEW REQUIRED PRIOR TO THE PLACEMENT OF FUTURE SIGNS.
4. REFER TO "WAYFINDING SIGNAGE" CONSTRUCTION DRAWING PACKAGE FOR DETAILS, CONNECTIONS, FOOTINGS, MATERIALS AND FINISHES.



DIRECTIONAL SIGN (SINGLE)



DRAWING NO.

2.1 - FIGURE 7

CONSTRUCTION DRAWINGS:

SCALE: 1:30

DATE: APRIL 2024

WAYFINDING SIGNAGE

2.2 Trails Signage

Intended Function

In response to recommendations in the CDEP, the Town conducted and approved a Trails Master Plan in March of 2011. In this document, a family of trails signage was conceived to respond to a need for consolidated, easily recognizable trails signage for the town trail network. These signs are intended to direct trail users along popular trails throughout the Town and lead users toward the many connecting regional trails. The theming of the Trail Signage is directly related to the theming of the Wayfinding Signage and is intended to continue the use of many of the rustic materials featured. As the Trail Signage may be placed in isolated locations, the aesthetic is intended to be simpler and easier maintained than the Wayfinding Signage.

Pedestrian Scale

These signs are intended to be used for navigation and orientation by users of the local trail network; thus, they have been designed using typical viewing heights and font sizes for pedestrian use.

Construction Drawings

Refer to "Trail Signage" drawing package for construction drawings (available from the Town of Hinton).

Sign Types

- A. Primary Trailhead Sign
- B. Secondary Trailhead Sign
- C. Directional Trail Marker
- D. Park and Trail Standard Signage
- E. Directional Trail Sign

A. Primary Trailhead Sign

i. Function

The Primary Trailhead Sign is used to identify the staging area for important town trails within Town limits. The sign may include information about the type of trail, accessibility, safety risks in the area, loop distances, trail difficulty, weather and any other information that would be pertinent to users of the trail.

ii. Location/ Orientation

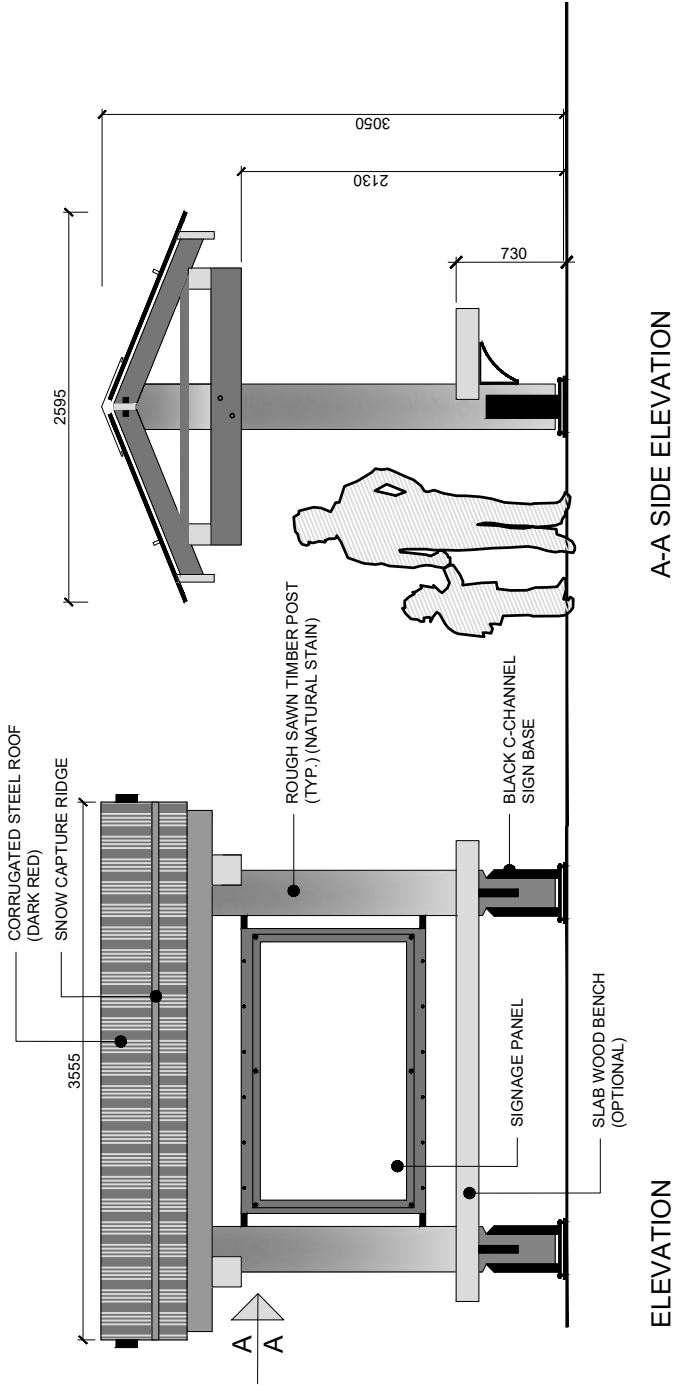
Primary Trailhead Signs will be single or double-sided and installed at the beginning of an important trail loop, at a location that can be easily accessed from within Town limits. Primary Trailhead Signs are usually installed where there would be ample parking.

iii. Materials

- Rough sawn timbers
- Steel sign base - C-channel style
- Exposed hardware
- Optional bench
- Corrugated steel roof (Dark Red)
- Full colour sign graphic(s) printed on weather and UV resistant materials

NOTE:

- 1. PRIMARY TRAILHEAD SIGN TO BE LOCATED AT THE BEGINNING OF AN IMPORTANT TRAIL LOOP. EASILY ACCESSIBLE WITHIN TOWN LIMITS.
- 2. CONTRACTOR RESPONSIBLE FOR SUBMITTING ALL PROOFS, SHOP DRAWINGS AND SUBSTITUTIONS PRIOR TO CONSTRUCTION.
- 3. SOILS MAY VARY. GEOTECHNICAL ASSESSMENT AND STRUCTURAL REVIEW REQUIRED PRIOR TO THE PLACEMENT OF FUTURE SIGNS.
- 4. REFER TO "TRAIL SIGNAGE" CONSTRUCTION DRAWING PACKAGE FOR DETAILS, CONNECTIONS, FOOTINGS, MATERIALS AND FINISHES.



PRIMARY TRAILHEAD SIGN



DRAWING NO.

2.2 - FIGURE 8

CONSTRUCTION DRAWINGS:

SCALE: 1:50

DATE: APRIL 2024

TRAIL SIGNAGE

B. Secondary Trailhead Sign

i. Function

Secondary Trailhead Signs are used to identify important information at intersections occurring within the trail network. The sign may include information about additional trail loops that may connect to other major trail segments. Such information may include distance calculations, location maps, accessibility, safety risks in the area, loop distances, trail difficulty, weather and any other information that would be pertinent to users of the trail.

ii. Location/ Orientation

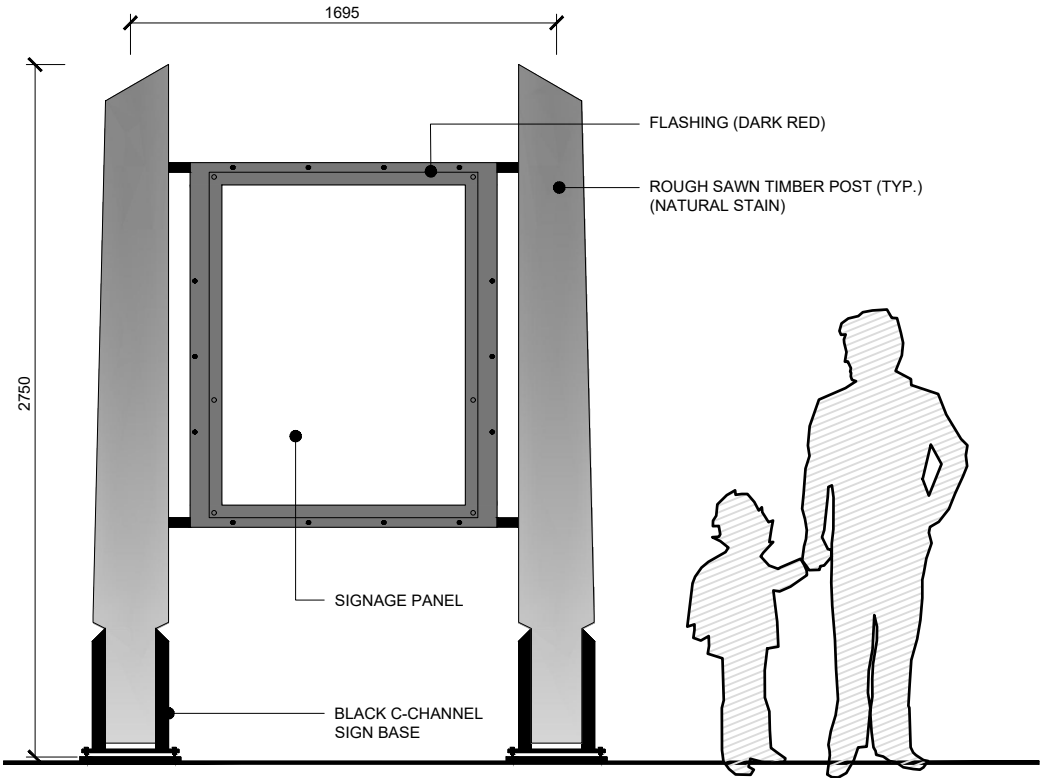
Secondary Trailhead Signs are either single or double-sided and installed at secondary priority intersections that occur within the trail system. These signs would be useful where two major trail loops intersect.

iii. Materials

- Rough sawn timbers
- Steel sign base - C-channel style
- Exposed hardware
- Full colour sign graphic(s) printed on weather and UV resistant materials

NOTE:

1. SECONDARY TRAILHEAD SIGN TO BE LOCATED AT SECONDARY PRIORITY INTERSECTIONS WITHIN THE TRAIL NETWORK.
2. CONTRACTOR RESPONSIBLE FOR SUBMITTING ALL PROOFS, SHOP DRAWING AND SUBSTITUTIONS PRIOR TO CONSTRUCTION.
3. SOILS MAY VARY. GEOTECHNICAL ASSESSMENT AND STRUCTURAL REVIEW REQUIRED PRIOR TO THE PLACEMENT OF FUTURE SIGNS.
4. REFER TO "TRAIL SIGNAGE" CONSTRUCTION DRAWING PACKAGE FOR DETAILS, CONNECTIONS, FOOTINGS, MATERIALS AND FINISHES.



ELEVATION

SECONDARY TRAILHEAD SIGN



DRAWING NO.	2.2 - FIGURE 9
SCALE: 1:30	DATE: APRIL 2024

CONSTRUCTION DRAWINGS:
TRAIL SIGNAGE

C. Directional Trail Marker

i. Function

The Directional Trail Marker is used to provide incidental information to users of a specific trail. It is used as a visual cue for users to know they are still on the correct loop. The visual cues may take the form of arrows, colours, kilometres complete versus kilometres remaining, or an identifier on a simple loop map denoting the user's location. These signs have been designed to meet the guidelines posed by the International Mountain Bike Association (IMBA).

ii. Location/ Orientation

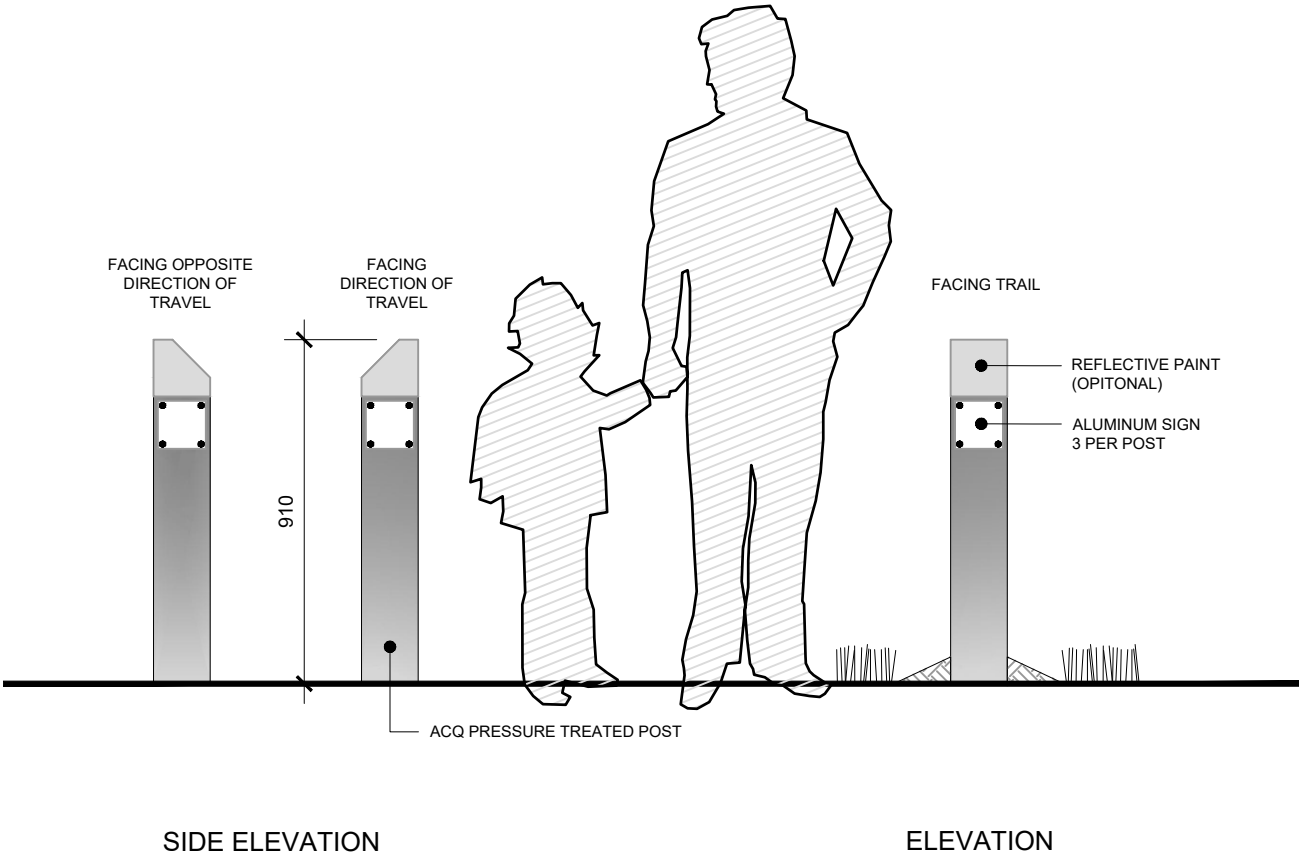
Directional Trail Markers will be multi-sided and should be installed at minor intersections that occur within the trail system, or where it is not clear how to continue along the trail.

iii. Materials

- Pressure treated post
- Removable signage
- Optional reflective paint

NOTE:

1. DIRECTIONAL TRAIL MARKERS ARE LOCATED AT MINOR INTERSECTIONS WITHIN THE TRAIL SYSTEM TO GUIDE USERS ALONG THE APPROPRIATE TRAIL.
2. CONTRACTOR RESPONSIBLE FOR SUBMITTING ALL PROOFS, SHOP DRAWINGS AND SUBSTITUTIONS PRIOR TO CONSTRUCTION.
3. SOILS MAY VARY. GEOTECHNICAL ASSESSMENT AND STRUCTURAL REVIEW REQUIRED PRIOR TO THE PLACEMENT OF FUTURE SIGNS.
4. REFER TO "TRAIL SIGNAGE" CONSTRUCTION DRAWING PACKAGE FOR DETAILS, CONNECTIONS, FOOTINGS, MATERIALS AND FINISHES.



DIRECTIONAL TRAIL MARKER



DRAWING NO.

2.2 - FIGURE 10

CONSTRUCTION DRAWINGS:

SCALE: 1:20

DATE: APRIL 2024

TRAIL SIGNAGE

D. Park and Trail Standard Signage

i. Function

The Park and Trail Standard Signage is used to present interpretive information relevant to the natural, historical and cultural features found at a given location within the park and trail system. It also provides space to offer safety information to users. These signs have been designed to complement the rest of the family and the scale of interactive features in the area.

ii. Location/ Orientation

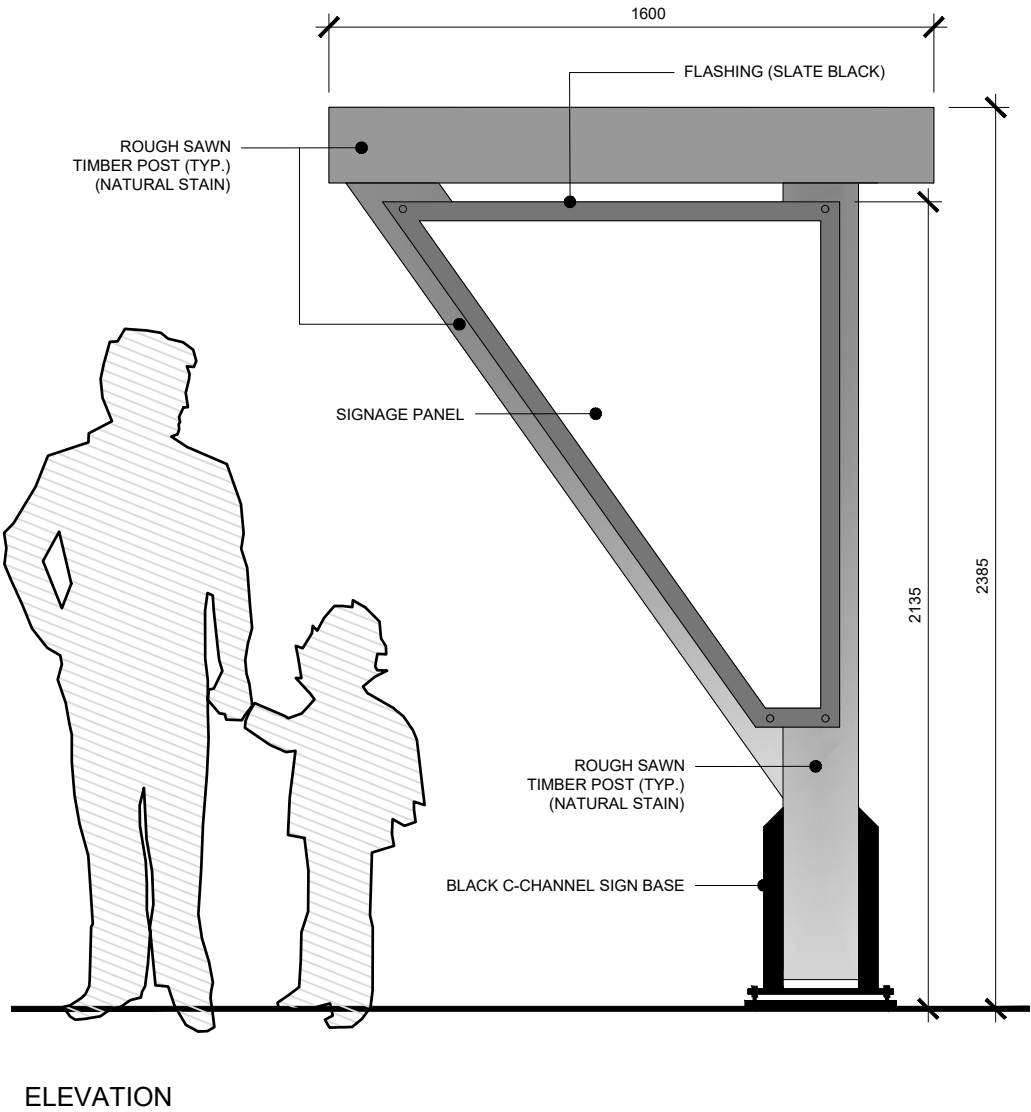
Park and Trail Standard Signage is single or double-sided and installed at the location of a point of interest related to an interpretive feature. The signs should be installed close enough to the relevant feature to provide ease of use, but far enough to avoid creating a barrier or hazard.

iii. Materials

- Rough sawn timbers
- Steel sign base - C-channel style
- Exposed hardware
- Full colour sign graphic(s) printed on weather and UV resistant materials

NOTE:

1. CONTRACTOR RESPONSIBLE FOR SUBMITTING ALL PROOFS, SHOP DRAWINGS AND SUBSTITUTIONS PRIOR TO CONSTRUCTION.
2. SOILS MAY VARY. GEOTECHNICAL ASSESSMENT AND STRUCTURAL REVIEW REQUIRED PRIOR TO THE PLACEMENT OF FUTURE SIGNS.
3. REFER TO "PARK AND TRAIL STANDARD SIGNAGE" CONSTRUCTION DRAWING PACKAGE FOR DETAILS, CONNECTIONS, FOOTINGS, MATERIALS AND FINISHES.



PARK AND TRAIL STANDARD SIGNAGE



DRAWING NO.

2.2 - FIGURE 11

CONSTRUCTION DRAWINGS:

SCALE: 1:20

DATE: APRIL 2024

HAPPY CREEK SIGNAGE

E. Directional Trail Sign

i. Function

The Directional Trail Sign is used to point users to interesting locations or destinations within a trail network. It is intended to rustic in nature.

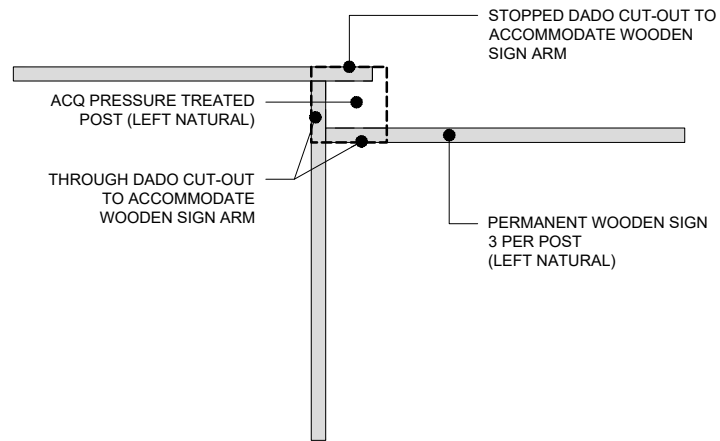
ii. Location/ Orientation

Directional Trail Signs are single or double-sided and installed at the important intersections where a user may need further directional information to get to their desired location.

iii. Materials

- Pressure treated post
- Routed pressure treated sign panels
- Exposed hardware

1. DIRECTIONAL TRAIL SIGN TO BE LOCATED AT IMPORTANT INTERSECTIONS ALONG DESIGNATED TRAILS.
2. CONTRACTOR RESPONSIBLE FOR SUBMITTING ALL PROOFS, SHOP DRAWINGS AND SUBSTITUTIONS PRIOR TO CONSTRUCTION.
3. SOILS MAY VARY. GEOTECHNICAL ASSESSMENT AND STRUCTURAL REVIEW REQUIRED PRIOR TO THE PLACEMENT OF FUTURE SIGNS.
4. REFER TO "HAPPY CREEK SIGNAGE" CONSTRUCTION DRAWING PACKAGE FOR DETAILS, CONNECTIONS, FOOTINGS, MATERIALS AND FINISHES.



Technical drawing of a wooden directional signpost. The signpost consists of a vertical post and a horizontal sign arm. The sign arm is labeled "PERMANENT WOODEN SIGN 3 PER POST (LEFT NATURAL)". The sign itself is labeled "NAME OF DESTINATION" and "ROUTED LETTERING: ARIAL; ALL CAPS; PAINTED BLACK". The post is labeled "ACQ PRESSURE TREATED POST (LEFT NATURAL)". Dimensions are provided: the sign arm is 950 units long, the post is 2135 units high, and the total height including the sign arm is 2485 units. A scale bar at the bottom indicates 0, 10, 20, 30, 40, 50, 60, 70, 80, 90, 100 units. A north arrow is located in the top right corner.

ELEVATION

DIRECTIONAL TRAIL SIGN



2.2 - FIGURE 12

DATE: APRIL 2024

HAPPY CREEK SIGNAGE

This page is intentionally blank

2.3 Park and Trail Interpretive Signage

Intended Function

Depending on the circumstance, it may be necessary to deviate from the Wayfinding Signage and Trail Signage families to respond to the theming requirements of a special development area or day use area. In some cases, specific areas may necessitate a dedicated signage family to reflect specific site history and culture (for example rich mining history to be celebrated through interpretive media on site). As such, the Park and Trail Interpretive signage family was developed using the standards set by the Trail Signage Family as a guideline.

Pedestrian Scale

These signs are intended to be used for navigation and orientation by users of the local trail network and visitors to a special development area or day use area. They have been designed using typical viewing heights and font sizes for pedestrian use.

Construction Drawings

Refer to “Happy Creek Signage” drawing package for construction drawings (available from the Town of Hinton).

Sign Types

- A. Multi-Panel Interpretive Sign
- B. Single Panel Interpretive Sign
- C. Interpretive Trail Sign

A. Multi-Panel Interpretive Sign

i. Function

The Multi-Panel Interpretive Sign is the largest interpretive sign in this specialty signage family. It is used to display interesting historical and cultural interpretive information about a special development area and may include important information about the type of trail, accessibility, safety risks in the area, loop distances, trail difficulty, weather and any other information pertinent to trail users.

ii. Location/ Orientation

The Multi-Panel Interpretive Sign is single sided and installed at the beginning of the main visitor access to the area or trail loop.

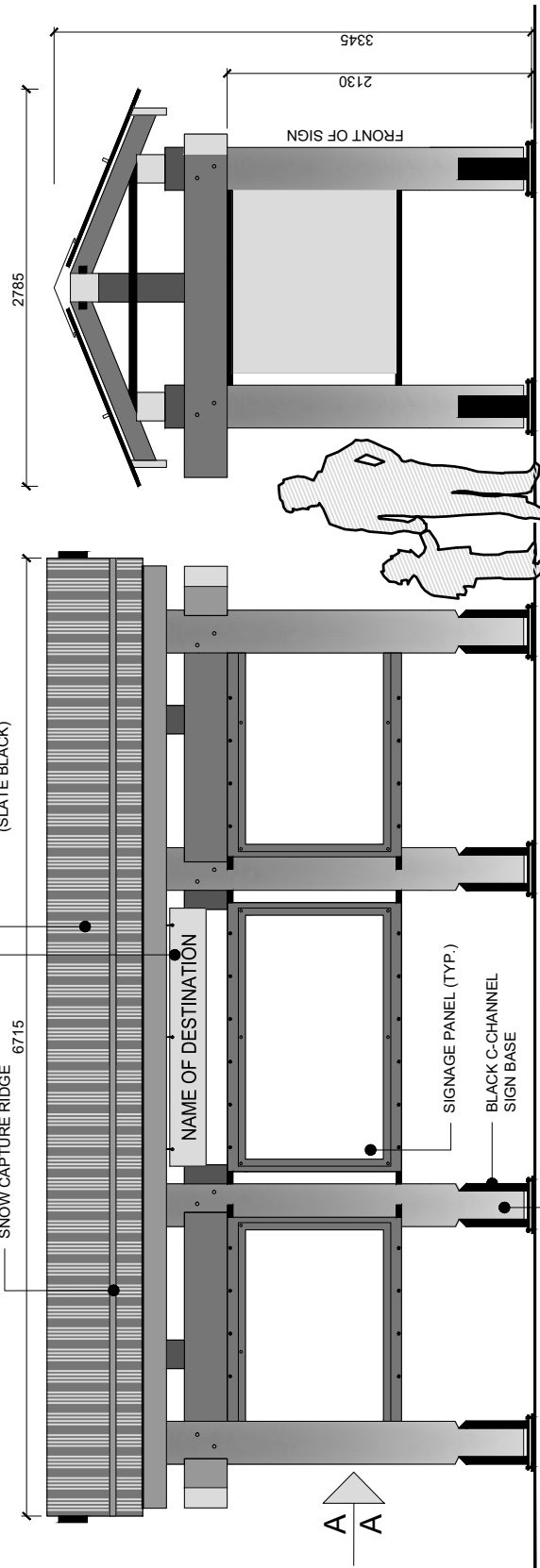
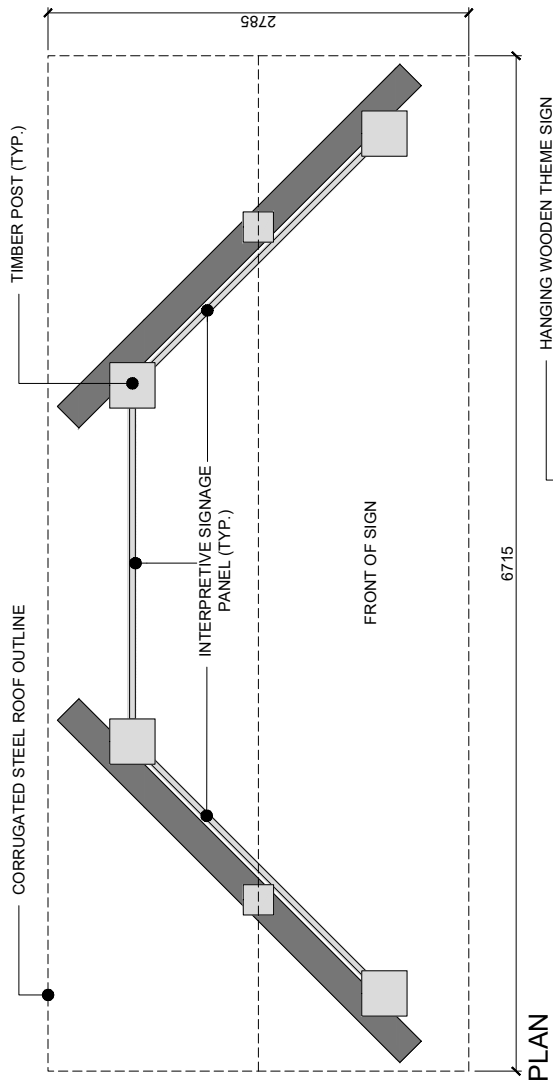
iii. Materials

While the dimensions and overall look of the sign are similar to the Trail Signage Primary Trailhead Sign, this version has been adjusted to reference details that celebrate an industrial theme.

- Rough sawn timbers
- "*Name of Destination*" hanging theme sign
- Steel sign base - C-channel style
- Exposed hardware
- Corrugated steel roof (Slate)
- Full colour sign graphic(s) printed on weather and UV resistant materials

NOTE:

1. MULTI-PANEL PRIMARY TRAILHEAD SIGNS ARE LOCATED AT THE BEGINNING OF THE MAIN VISITOR ACCESS TO THE DAY USE TRAIL USE.
2. CONTRACTOR RESPONSIBLE FOR SUBMITTING ALL PROOFS, SHOP DRAWINGS AND SUBSTITUTIONS PRIOR TO CONSTRUCTION.
3. SOILS MAY VARY. GEOTECHNICAL ASSESSMENT AND STRUCTURAL REVIEW REQUIRED PRIOR TO THE PLACEMENT OF FUTURE SIGNS.
4. REFER TO "HAPPY CREEK SIGNAGE" CONSTRUCTION DRAWING PACKAGE FOR DETAILS, CONNECTIONS, FOOTINGS, MATERIALS AND FINISHES.



A-A SIDE ELEVATION

MULTI-PANEL INTERPRETIVE SIGN



DRAWING NO.

2.3 - FIGURE 13

CONSTRUCTION DRAWINGS:

SCALE: 1:50

DATE: APRIL 2024

HAPPY CREEK SIGNAGE

B. Single Panel Interpretive Sign

i. Function

The Single Panel Interpretive Sign is used to identify the staging area for important trails within Town limits. The sign may include information about the type of trail, accessibility, safety risks in the area, loop distances, trail difficulty, weather and any other information pertinent to trail users.

In addition, this sign is also intended to host interpretive information pertaining to the historical, natural or cultural relevance of the site.

ii. Location/ Orientation

Single Panel Interpretive Signs are single or double-sided and installed at the beginning of an important trail loop, at a location that can be easily accessed from within Town limits. Signs are usually installed where there is ample parking, or adjacent to a site feature/area to provide safety, interpretive and location information.

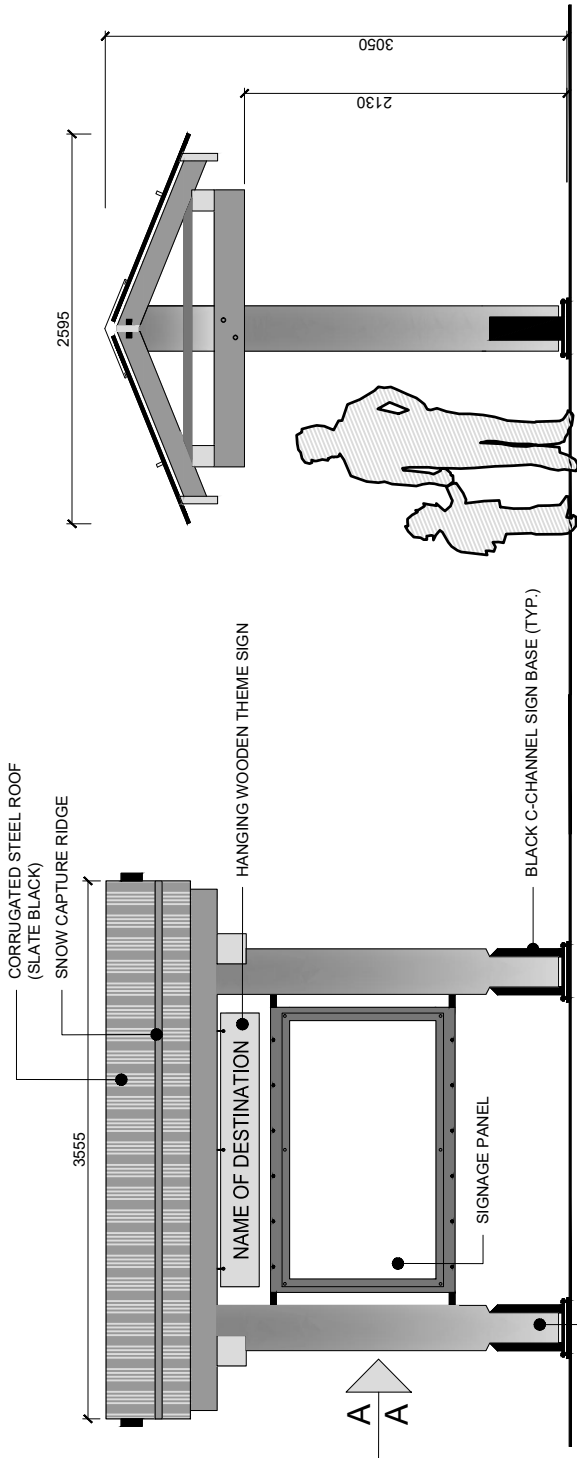
iii. Materials

While the dimensions and overall look of the sign is similar to the Trail Signage Primary Trailhead Sign, this version has been adjusted to reference details that celebrate an industrial theme.

- Rough sawn timbers
- "Name of Destination" hanging theme sign
- Steel sign base - C-channel style
- Exposed hardware
- Corrugated steel roof (Slate)
- Full colour sign graphic(s) printed on weather and UV resistant materials

NOTE:

- 1. PRIMARY TRAILHEAD SIGNS ARE LOCATED AT THE BEGINNING OF AN IMPORTANT TRAIL LOOP.
- 2. CONTRACTOR RESPONSIBLE FOR SUBMITTING ALL PROOFS, SHOP DRAWINGS AND SUBSTITUTIONS PRIOR TO CONSTRUCTION.
- 3. SOILS MAY VARY. GEOTECHNICAL ASSESSMENT AND STRUCTURAL REVIEW REQUIRED PRIOR TO THE PLACEMENT OF FUTURE SIGNS.
- 4. REFER TO "HAPPY CREEK SIGNAGE" CONSTRUCTION DRAWING PACKAGE FOR DETAILS, CONNECTIONS, FOOTINGS, MATERIALS AND FINISHES.



A-A SIDE ELEVATION

ELEVATION

SINGLE PANEL INTERPRETIVE SIGN



DRAWING NO.

2.3 - FIGURE 14

CONSTRUCTION DRAWINGS:

SCALE: 1:50

DATE: APRIL 2024

HAPPY CREEK SIGNAGE

C. Interpretive Trail Sign

i. Function

The Interpretive Trail Sign is used to highlight relevant historical, cultural or environmental information as users navigate amenity spaces.

ii. Location/ Orientation

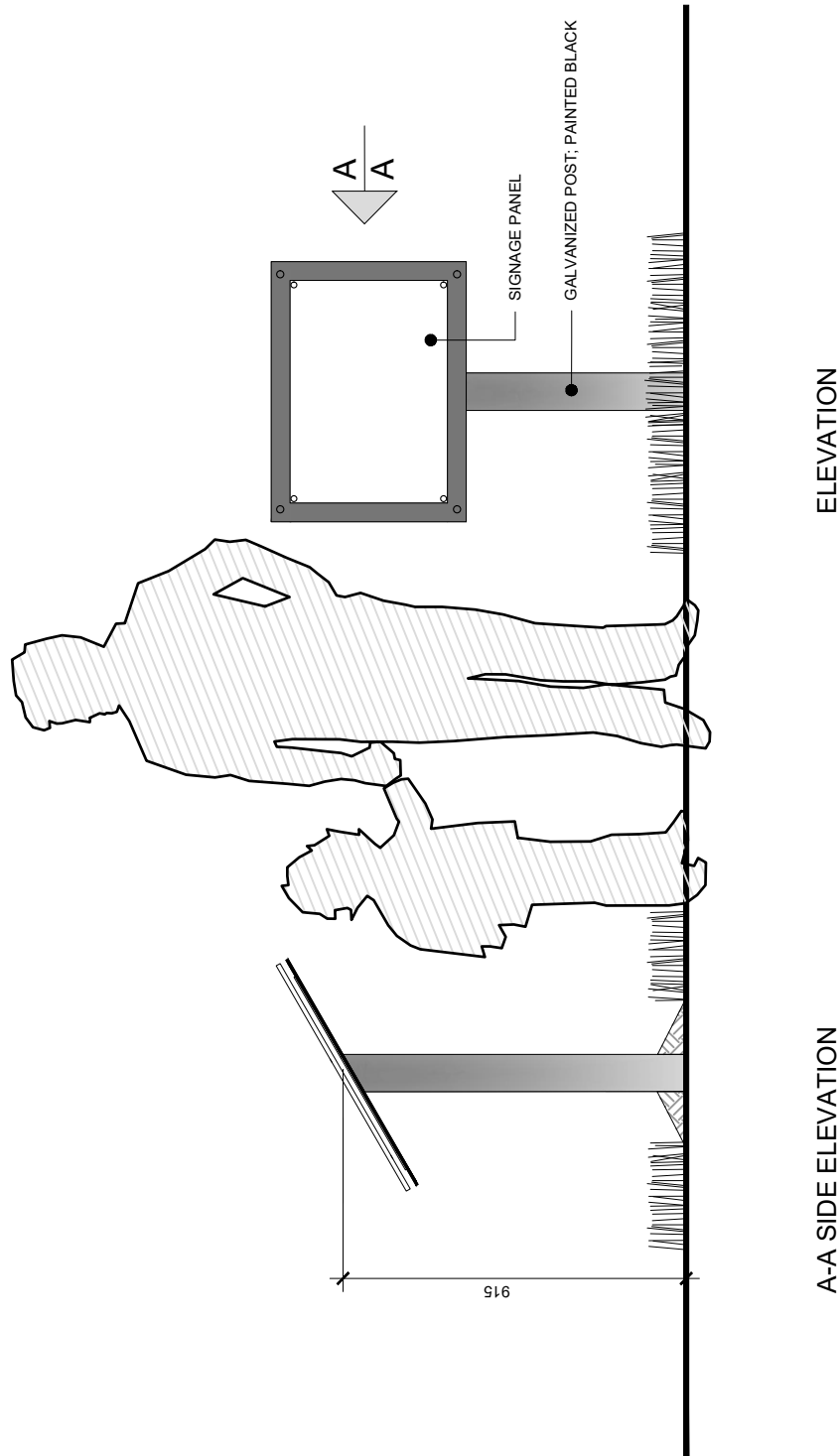
Interpretive Trail Signs are single sided and installed regularly along amenity spaces in locations of historical, cultural, or environmental relevance, where possible. It is not necessary for a sign to be located directly adjacent to the element it refers to but should be within proximity to ensure relevance is maintained.

iii. Materials

- Welded steel post and panel
- Full colour sign graphic(s) printed on weather and UV resistant materials

NOTE:

1. INTERPRETIVE TRAIL SIGN TO BE LOCATED REGULARLY ALONG THE HAPPY CREEK DAY USE PATH IN LOCATIONS OF HISTORICAL RELEVANCE.
2. CONTRACTOR RESPONSIBLE FOR SUBMITTING ALL PROOFS SHOP DRAWINGS AND SUBSTITUTIONS PRIOR TO CONSTRUCTION.
3. SOILS MAY VARY. GEOTECHNICAL ASSESSMENT AND STRUCTURAL REVIEW REQUIRED PRIOR TO THE PLACEMENT OF FUTURE SIGNS.
4. REFER TO "HAPPY CREEK SIGNAGE" CONSTRUCTION DRAWING PACKAGE FOR DETAILS, CONNECTIONS, FOOTINGS, MATERIALS AND FINISHES.



INTERPRETIVE TRAIL SIGN



DRAWING NO.

2.3 - FIGURE 15

CONSTRUCTION DRAWINGS:

SCALE: 1:20

DATE: APRIL 2024

HAPPY CREEK SIGNAGE

3.0 MAINTENANCE AND REPLACEMENT

3.1 Preventing Damage, Graffiti and Vandalism

It is important to address any form of disrepair as soon as it occurs, whether intentional (such as graffiti or vandalism) or incidental. Visible damage allowed to remain beyond a few days imply that other damages are welcome.

Suggested strategies to keep disrepair, graffiti and vandalism to a minimum:

Prompt Response: Fix damages, graffiti and vandalism immediately (within 48 hours)

Hotline: Advertise a number where residents can report damaged or vandalised signs

Public Education: A free information session or a program through local schools would help explain the detrimental effects that vandalism and graffiti have on a community, and what to do if they witness it occurring.

Drop-in Activities: Hold after school and weekend drop-in activities at the Recreation Centre, Hinton Bike Park to promote fellowship and community involvement.

Community Service: Create a program for those caught doing vandalism or graffiti. For example, those convicted are then responsible for completing repairs around Town in an advertised fashion, such as a shirt advertising the anti-graffiti/ vandalism public education campaign.

3.2 Maintenance Practices

Logs and other treated wood (except pressure treated plywood):

Recoat every three to four years with approved stain. If the wood gets damaged, ensure it is touched up with approved stain to prevent moisture getting in and taking hold.

Aluminum Components

(Including channels, sign inserts, mountain cut outs and decorative brackets):

As needed, wash with a regular detergent and rinse thoroughly. A power washer is acceptable, but care should be taken to keep the pressure to a minimum and wash from a few feet away to avoid peeling the labels or distressing the paint finish.

Steel Sign Bases (including "Sleeve" and "C-Channel" style)

These will last for years undamaged. If damage occurs to the paint, touch ups should be made as soon as possible to prevent possible corrosion.

Painted Steel Pipe (where applicable)

These will last for years undamaged. If damage occurs to the initial powder coat or paint application, touch ups should be made as soon as possible to prevent possible corrosion.

Tension Chains:

For signs secured with tension chain, it may be necessary to tighten the eye bolt slightly each season to maintain constant tension. Seasonal monitoring of the chain is recommended.

Graffiti:

- Sign bases, signage inserts and other metal components:
Use standard graffiti wipes (available from paint suppliers) as per manufacturer's instructions.
- Wood elements:
Sand graffiti with a coarse paper until markings are gone. Finish sanding with a fine paper. Recoat the affected area with two coats of approved stain, ensuring all raw wood is covered.

Vandalism:

- Sign bases, signage inserts and other metal components:
Touch up scratched or carved metal elements with approved paint. It may be possible to manually re-work bent components. Touch up any exposed areas with approved paint. Some damages may be irreversible, and replacement will be necessary. This will be determined on a case-by-case basis.
- Wood elements:
For minor vandalism to wood components, such as carving or notching, use the same technique as for "Graffiti" to remedy. For major vandalism, such as burning or chain saw scars, components will likely have to be replaced.

3.3 Maintenance Specifications

Paint and Coatings

The following paints, stains and/or surface applications have been used in the construction of Hinton signage to date. All proposed alternatives shall be submitted for review and approval by the Town or Town representative.

- Logs and other treated wood components (except pressure treated plywood):
Sikkens Base Coat, Water Base 234-190 or approved equivalent
-Followed by-
Sikkens Proluxe 23 Topcoat RE Wood Finish in '078 Natural' or approved equivalent
- Aluminum components (red), including signage insert and sign channel face and back:
Endura Drum Beat Red CLR29867 or approved equivalent
- Aluminum components (green), including decorative bracket and sign channel border:
Endura Green CLR4154 or approved equivalent
- Aluminum components (silver) including mountain cut out:
Finish to be Brushed Aluminum
-Followed by-
Endura Clear 100 or approved equivalent
- Aluminum components (black), including Silhouette:
Powder coat with 'A537 *Sandtex Black*' adhering to manufacturer's specifications or approved equivalent
- Sign Bases (black), including sleeve and c-channel style:
Endura Ultra Grip High Zinc Primer (used as a cold galvanizer) or approved equivalent
-Followed by-
Endura EX2C Topcoat in 'Black' or approved equivalent
- Painted Steel Pipe (brown):
Powder coat with 'RAL 1011 *Brown Beige*' or approved equivalent adhering to manufacturer's specifications. Should damage occur, apply *Endura EX2C Topcoat*, colour-matched to 'RAL 1011 *Brown Beige*' or approved equivalent

